

BD25-6-034

Tweeter

DOMEMATERIAL: DIAMOND
APPLICATION: TWEETER
NOMINAL DIAMETER: 25 mm
SENSITIVITY: 91 dB

MAIN FEATURES :

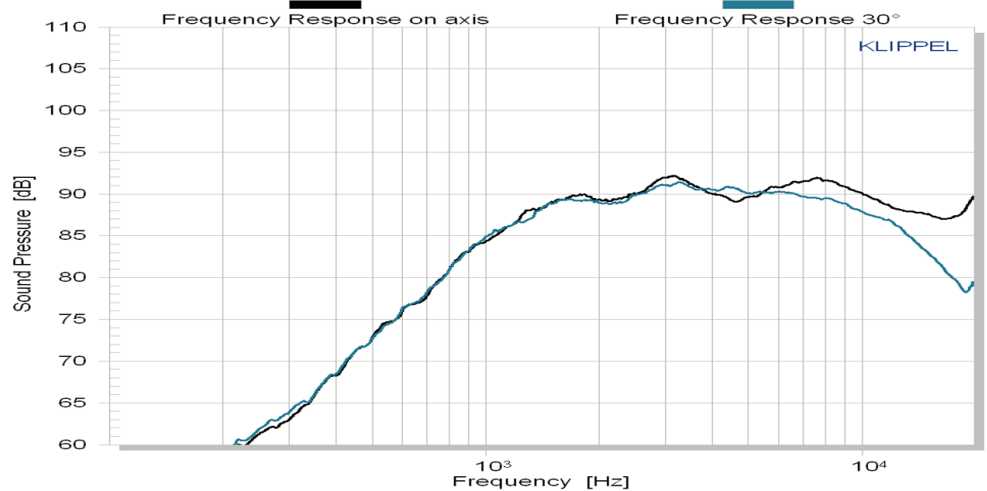
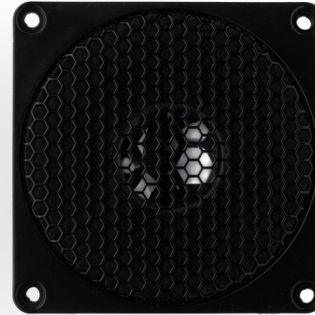
UNDERHUNG MOTOR DESIGN

SOFT FABRIC SURROUND

VENTED VC & POLE PIECE

FERROFLUID FILLING

2000 HZ - 60 KHZ



The **BD25 - 6 - 034** is a 1 inch tweeter with ultra hard **diamond dome** in a 82 mm frontplate.

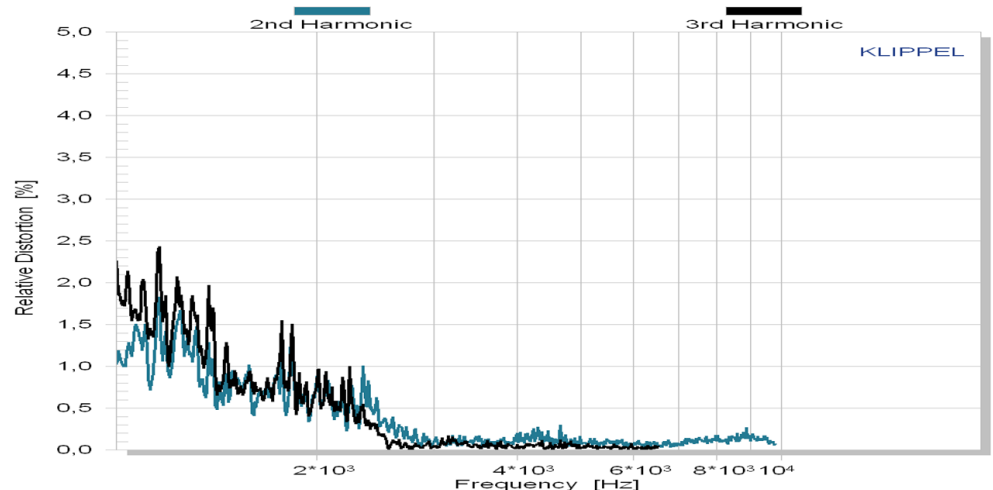
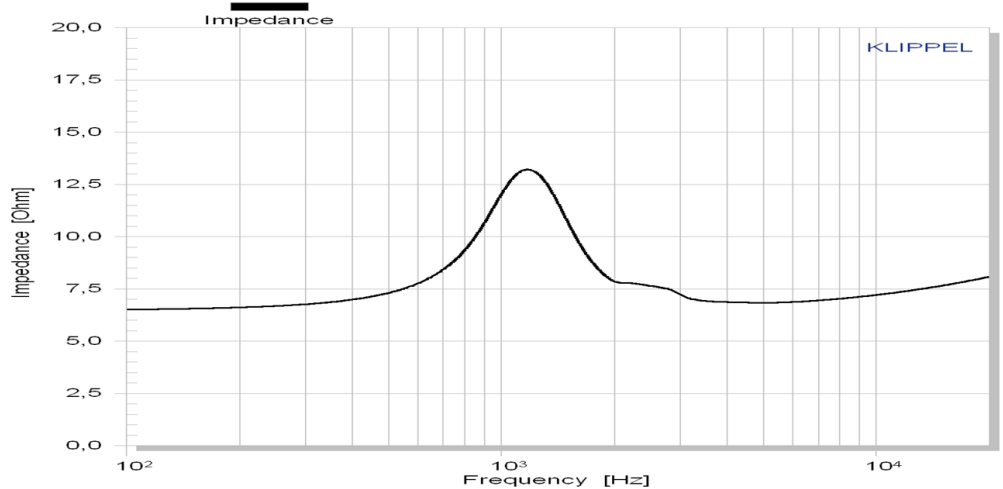
As the dome breakup is around 60 kHz and well damped, no cutouts are required.

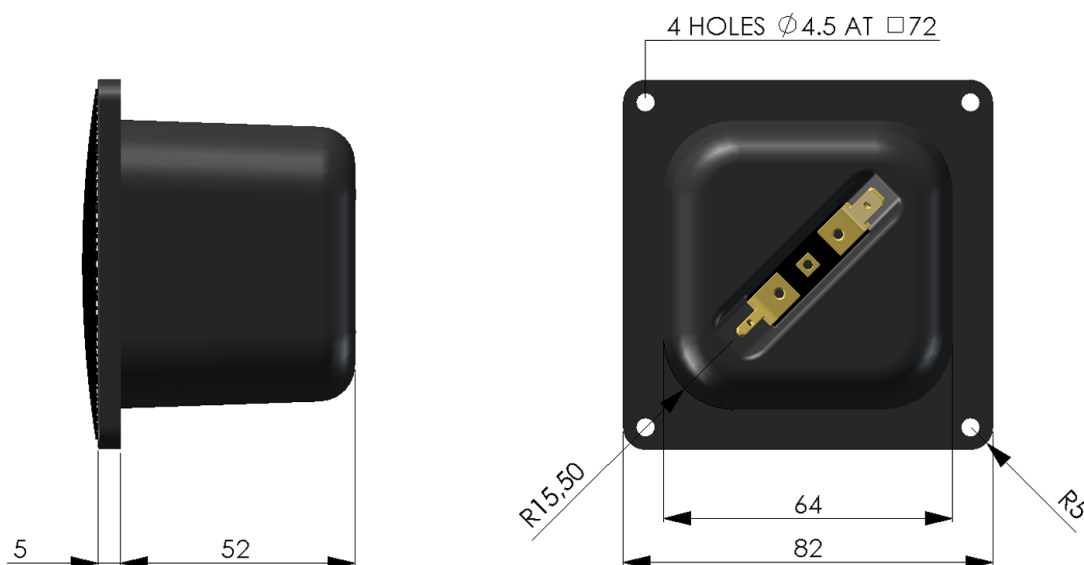
The unsurpassed rigidity of the diamond dome leads to most accurate conversion from electrical energy to sound pressure.

An **FEA optimized** underhung motor design with vented aluminium voice coil former and neodymium magnet guarantees low energy storage and excellent heat transfer.

The **soft fabric surround** and ferrofluid with high viscosity center the moving parts with distinctive linearity.

We recommend an application above 2000 Hz.





Mechanical data		
Overall square	82	mm
Cutout hole square	64	mm
Frontplate depth	5	mm
Overall depth	57	mm
Motor assembly diameter	-	
Motor assembly depth	-	
Screw fitting	DIN 7984, 4mm	
Terminal	+ : 4.8 x 0.8 / - : 2.8 x 0.8	mm
Shipping weight / net weight (one piece)	0.48 / 0.38	mm
Shipping box size (pair)	130 / 130 / 190	mm

Thiele/Small Parameters			
Sensitivity (2.83V / 1m)	Lp	91*	dB
DC-resistance	Re	6.3	Ohm
resonance frequency	Fs	1189	Hz
equivalent volume of air	Vas	-	L
mechanical Q	Qms	2.30	
electrical Q	Qes	1.79	
total Q	Qts	1.01	
effective piston area	Sd	6.38	cm ²
moving mass	Mms	0.25	g
suspension compl.	Cms	0.069	mm/N
mechanical resistance	Rms	0.84	kg x s

Voice Coil data			
Power handling	P	120*	Watt
Linear excursion	Xmax	+/- 0.15	mm
Voice coil diameter		16.4	mm
Voice coil former material		Al	
Voice coil wire material		Cu	
Voice coil inductance	Le	0.02	mH
Force factor	Bl	2.61	N/A
Motor type		Underhung	
Ferrofluid filling		yes	

* Please refer to www.accuton.com for exact measurement conditions and further information.