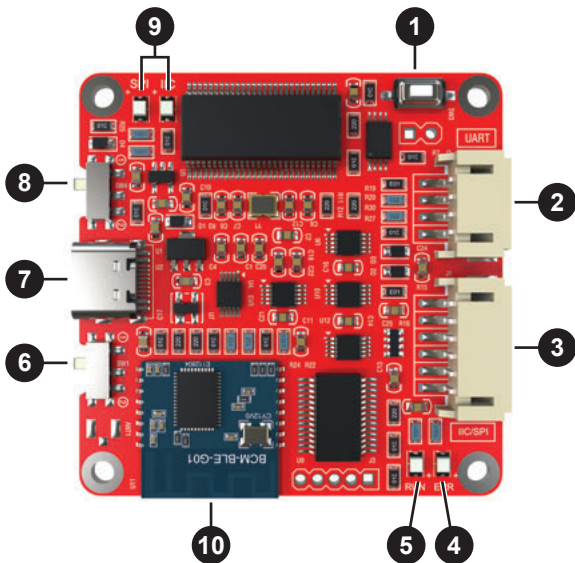


# Parameter Adjustment Board with UART/BLE for APP/PC UI Control-KPX

## Quick Start Wiring Guide

Model: KPX

1. SW3 Boot Loader Button (Service Only)
2. J2 – Connection to Dayton Audio KABX Controlled Products
3. J1 – Connection to SigmaStudio Controlled Products
4. Error Status LED
5. Microcontroller Status LED
6. SW1 – Programming mode Switch
7. U1 – USB Type-C for PC Connection and 5V Power
8. SW4 - USBi Communication Mode Switch
9. USBi Communication Status LEDs
10. Bluetooth BLE (For Future Use)



SW1 Position	Programing MODE	FUNCTION	SUPPORTED DEVICES
(1)	USBi Sigma DSP Connection via J1	SigmaStudio Control (IIC or SPI)	DSPB-100, DSPB-250, DSPB-K, KABD-250, KABD-230, KABD-430, KABD-4100
(2)	Dayton Audio KABX Connection via J2	Dayton Audio ARM DSP UI (UART)	KAB-250v4, KAB-230v4, KAB-100Mv2

SW4 Position	USBi Communication Type	FUNCTION	SUPPORTED DEVICES
(1)	SPI	For devices with ADAU1452 Chips	Future Products
(2)	IIC	For devices with ADAU1701 Chips	DSPB-100, DSPB-250, DSPB-K, KABD-250, KABD-230, KABD-430, KABD-4100