

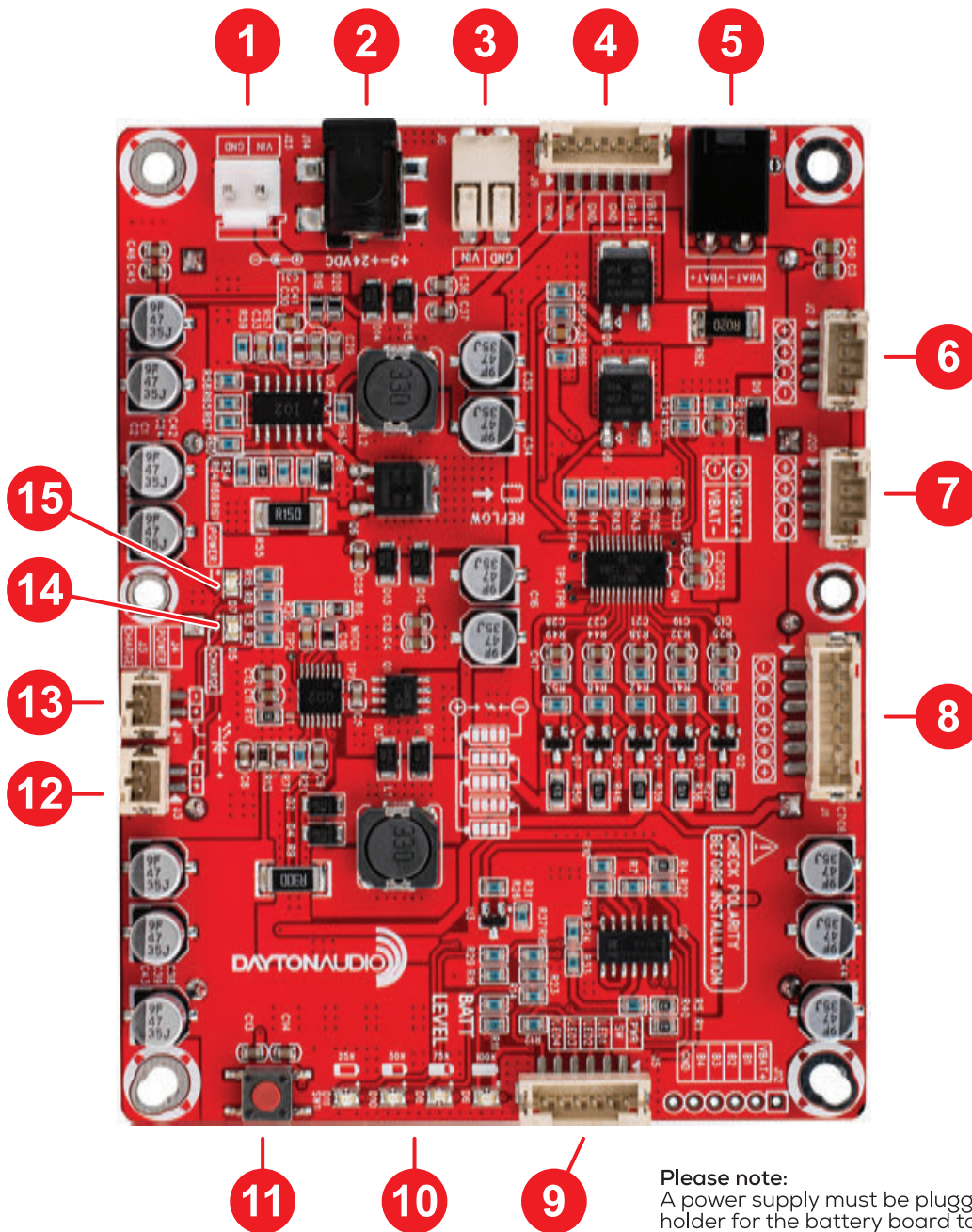


18650 5-24V Input Lithium Battery Balance and Protection Extension Board

Quick Start Wiring Guide

Model: LBB-5S

1. Power Input 5-24 VDC – J23
2. Power Input 5-24 VDC – J14
3. Power Input 5-24 VDC – J6
4. Expansion Port – J9
5. Power Output 21 VDC – J16
6. Power Output 21 VDC – J2
7. Power Output 21 VDC – J20
8. Power Output 21 VDC – J1
9. External Battery Level Status and Control Switch Port – J5
10. LED Indicators for Battery Level Status (Estimated)
11. Battery Level Status Switch
12. External Charge Indicator Port – J3
13. External Power Indicator Port – J4
14. LED Indicator for Charging
15. LED Indicator for Power



Please note:
A power supply must be plugged into the holder for the battery board to have power output after installing or reinstalling batteries.