

Ambiance channel for 2x Markaudio CAP70, 3 1/4in wideband drive units

Notes:

- 0/ Sealed box enclosure designed for use as ambiance or rear-channel
- 1/ Drivers wired in series or parallel as desired
- 2/ 18mm sheet material assumed
- 2/ All internal faces lagged 20mm - 25mm BAF wadding or equivalent

1/2ohm series R assumed for typical wire loop, connection resistance

Nominal $Q_{tc} = 0.79$

Nominal $F_b = 88\text{Hz}$

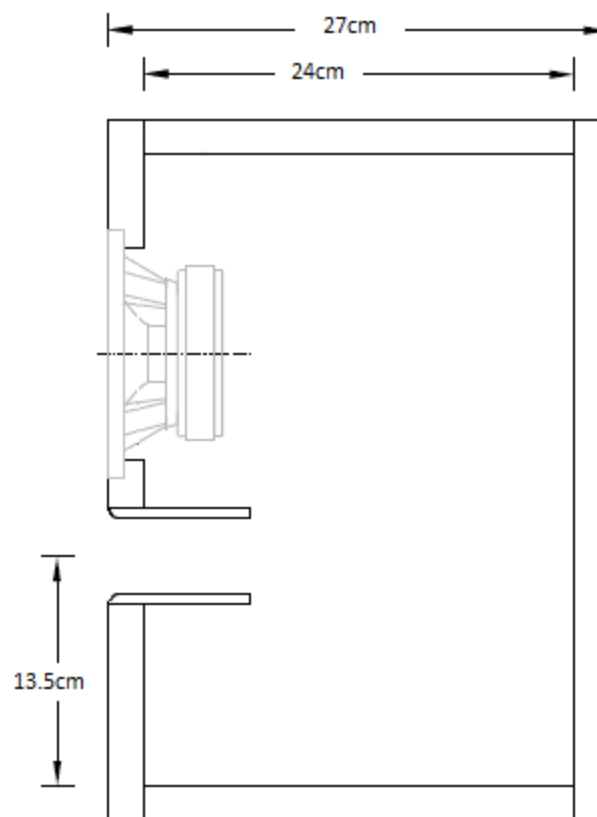
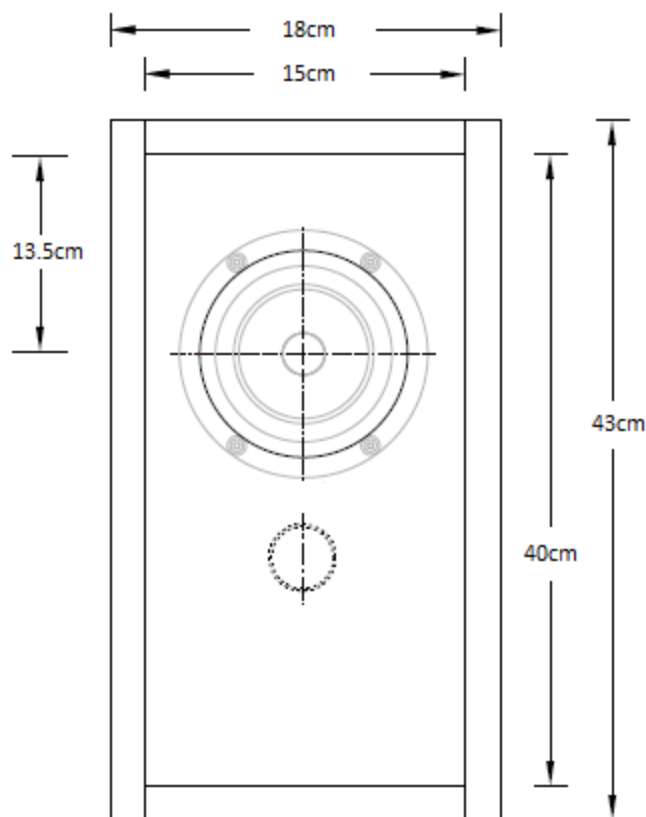
Nominal $F_6 = 62\text{Hz}$ [anechoic]

Fenlon 70CHR



markaudio
New Audio Fidelity

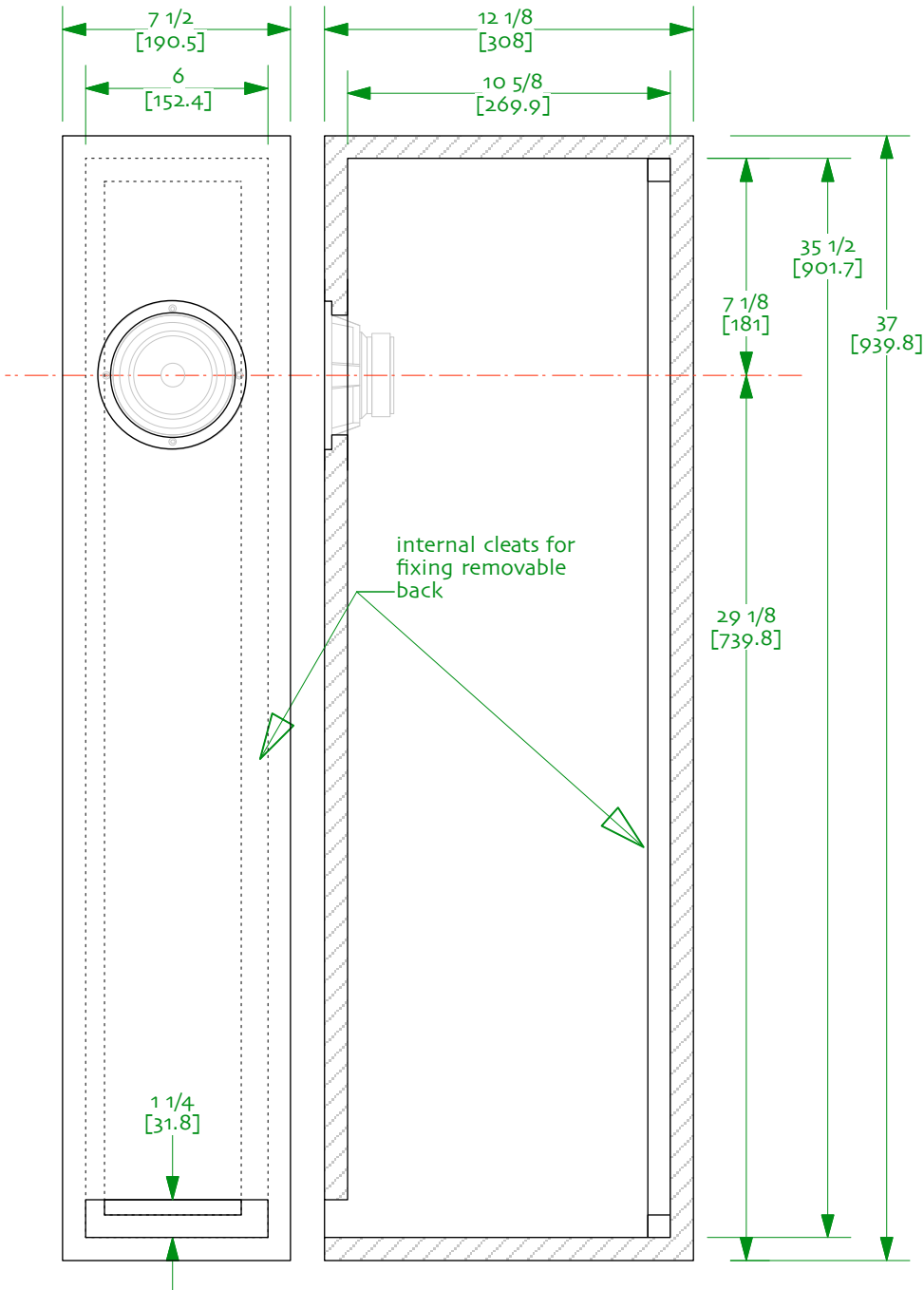
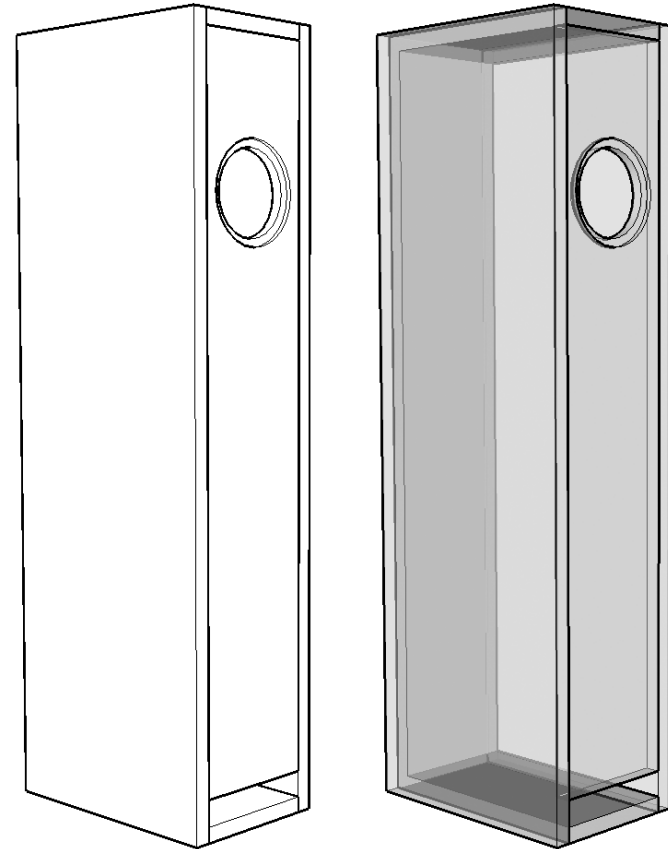
- Simple vented box designed by Mark Fenlon for CHR70 Gen.3 driver!
- Industry norm front port!
- Projects bass forwards for interesting and captivating sound characteristic!
- Simple construction!
- Port 3cm wide and 4.4cm long for powerful bass performance!
- Line box apart from front panel with 2cm - 3cm thick polyester damping material



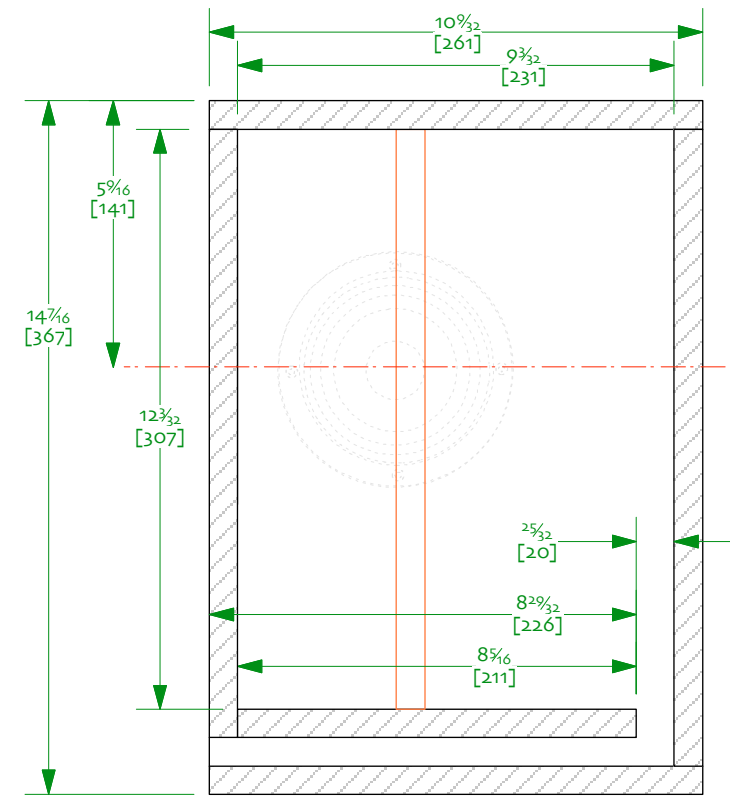
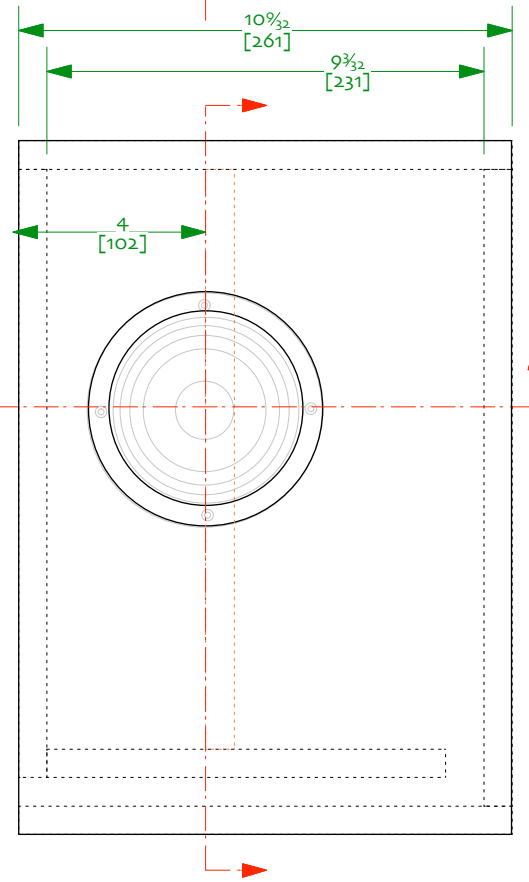
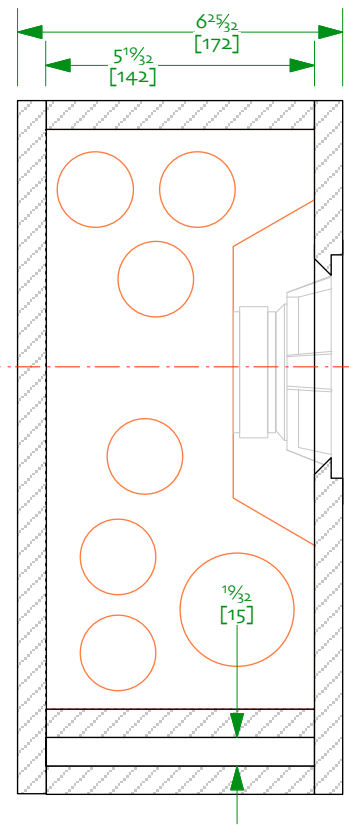
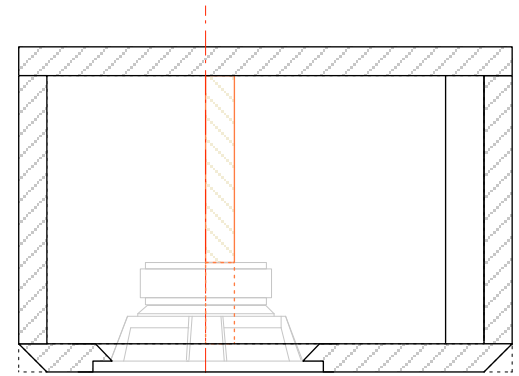
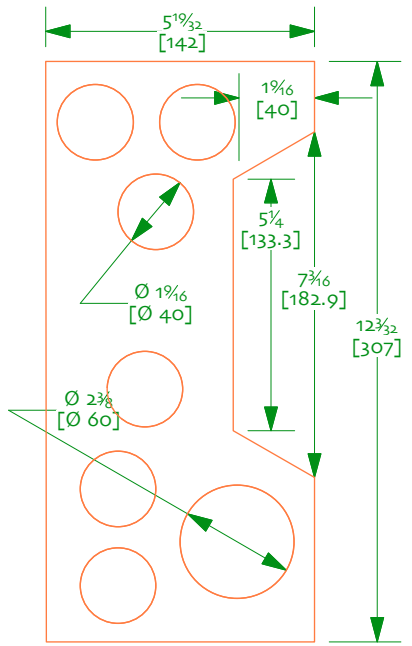


Pensil R70.3 | CHR-70.3

designed by S Lindgren drawn by dld
20-june-2011
© 2011 Markaudio All rights reserved
NOT for commercial use without prior
written approval from Markimage Limited

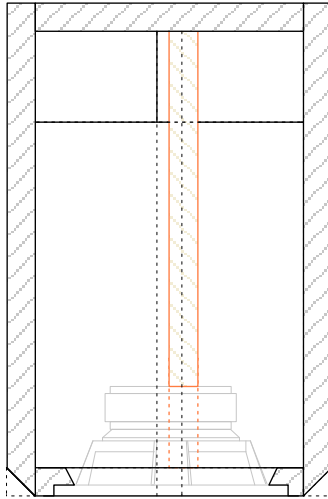


- Notes:
- 0/ drawing uses $\frac{3}{4}$ " (19.1mm) material. 18-20mm OK. Quality multi-ply recommended
 - 1/ stuff with 0.7 lbs / ft³ (14.7 ounces = 410 g) of polyfill
 - 2/cleats on back to allow for removable back, useful for adjusting the stuffing
 - 3/ bracing is optional. For bracing ideas please see the bracing sheet in the superPensil12 plans



Notes:

- 0/ A classic Golden Ratio based derivative of the dCHR-Ken70 designed for modified Mark Audio CHR70 (any series) will work well with stock driver
- 1/ All panels 15mm
- 2/ brace shape is only suggestive -- prime purpose is to brace driver, it needs to be about 35-40% holes. (ie if you have to mount a terminal cup in the middle, you'll want to make sure the brace allows clearance), It is intentionally just off centre.
- 3/ Don't forget to angle cut the back of the driver cut-out to give it breathing room
- 4/ All internal panels lined with $\sim 1/2"$ (12mm) wool felt (preferred), 1" (25mm) poly-fluff batting, or $3/4"$ (19mm) fiberglass Note that it is hard to get into the box after it is sealed up



Notes:

- o/ A classic Golden Ratio based derivative of the dCHR-Ken70 designed for modified Mark Audio CHR70 (any series) will work well with stock driver
- 1/ All panels 15mm
- 2/ brace shape is only suggestive -- prime purpose is to brace driver, it needs to be about 35-40% holes. (ie if you have to mount a terminal cup in the middle, you'll want to make sure the brace allows clearance), It is intentionally just off centre.
- 3/ Don't forget to angle cut the back of the driver cut-out to give it breathing room
- 4/ All internal panels lined with ~1/2" (12mm) wool felt (preferred), 1" (25mm) poly-fluff batting, or 3/4" (19mm) fiberglass Note that it is hard to get into the box after it is sealed up



Slim Classic GR dCHR-Ken70 1v01
 Mark Audio CHR70.3 (15mm)
 © 2010-2013 planet_10 enterprises limited
 30-November-2013 designed & drawn by dld
 free for non-commercial use only

