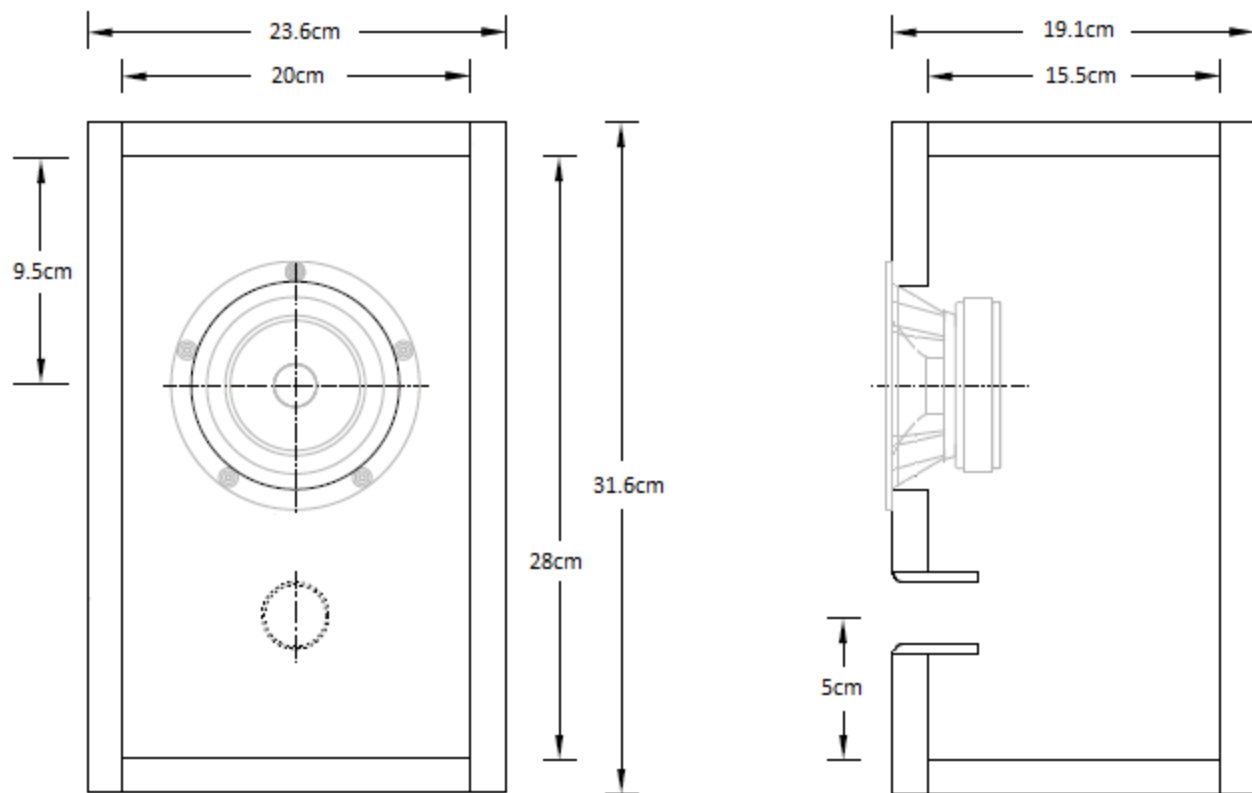


Fenlon 110 Pluvia

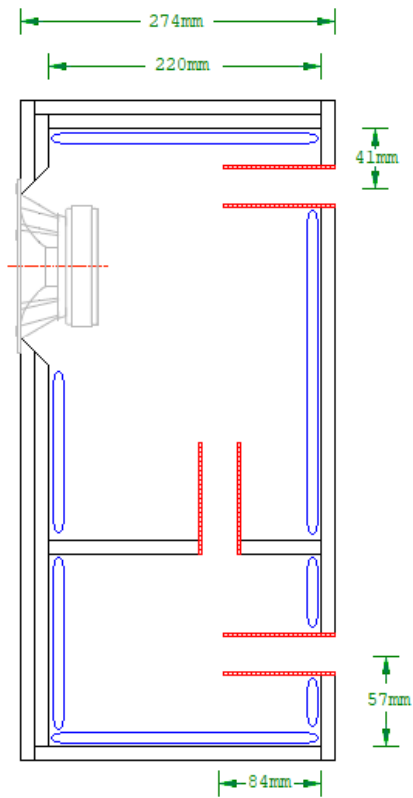
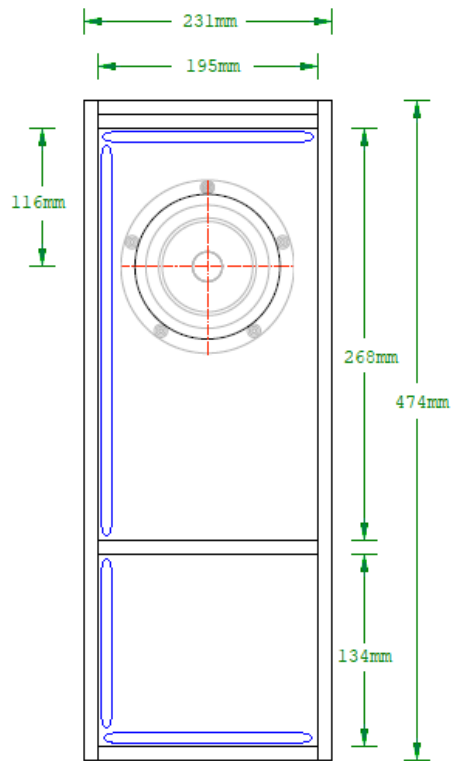


markaudio
New Audio Fidelity

- Bass reflex box designed by Mark Fenlon for Pluvia 11 driver!
- Industry norm front port!
- Projects bass forwards for interesting and captivating sound characteristic!
- Simple construction!
- Port 3.5cm wide and 7.4cm long for powerful bass performance!
- Line box apart from front panel with 1.5cm - 2cm thick polyester damping material



Design consultant: Dr. S. Lindgren



Bianca

Traditional double-chamber reflex
for
Markaudio Pluvia 11

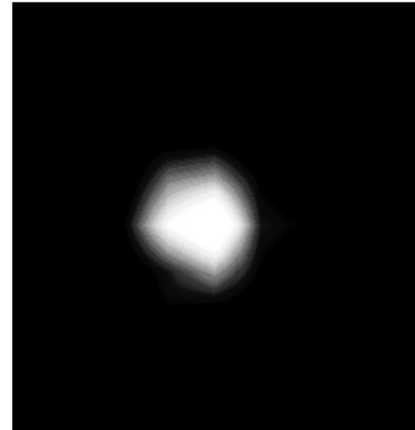


Notes:

- 0/ 18mm sheet build material assumed. MDF acceptable, quality void-free multiply recommended
- 1/ Front & top baffles doubled for increased rigidity
- 2/ Bracing not shown but recommended.
- 3/ Chamfer / relieve driver cutout to reduce reflections & enhance airflow
- 4/ Top, front, rear & one side baffle lagged 19mm - 25mm bonded acoustic fibreglass, SAE-F10, jute or equivalent. Avoid acoustic foam
- 5/ All vents untapered cylindrical ducts 30mm diameter x 137mm long

Design assumes voltage source amplifier with 1/2ohm series R for typical wire loop, connection losses

Fb = 39.2Hz
F6 = 34Hz [nominal anechoic]
F10 = 31.7Hz [nominal anechoic]





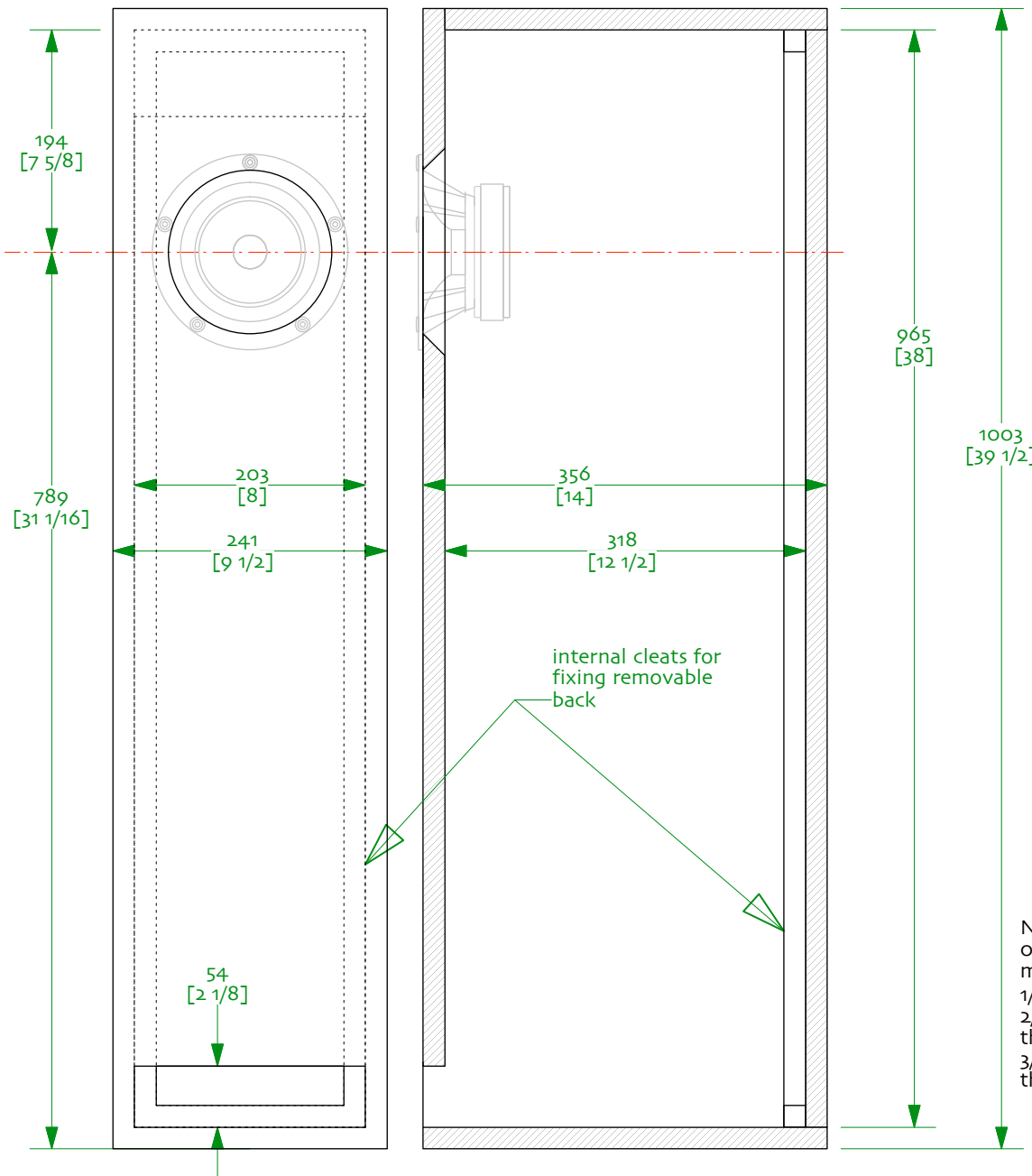
markaudio
New Audio Fidelity

Pensil A11/P11

Alpair 11ms/Pluvia Eleven

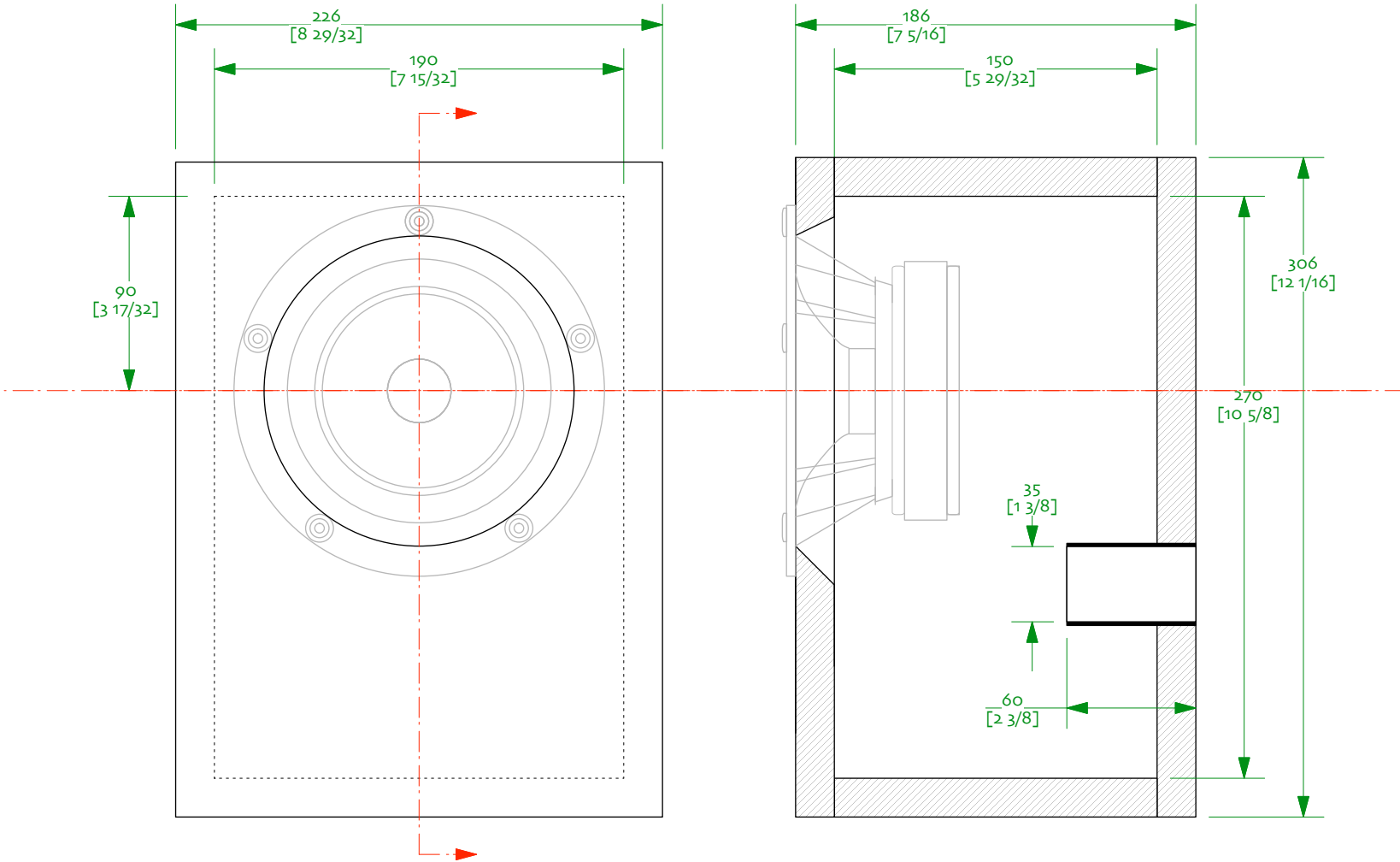
designed by S Lindgren drawn by dld
30-august-2018

©2010-2018 Markaudio All rights reserved
NOT for commercial use without prior
written approval from Markimage Limited



Notes:

- 0/ drawing uses 3/4" (19.05mm) material. 18-20mm OK. Quality multi-ply recommended
- 1/ stuff with 0.65lbs / ft³ (23 ounces = 648 g) of polyfill
- 2/cleats on back to allow for removable back, useful for adjusting the stuffing
- 3/ bracing is optional but recommended. For bracing ideas please see the bracing sheet in the superPensil12 plans



- Notes:
- 0/ designed for the Mark Audio Pluvia 11
 - 1/ drawn with 18mm material. Quality multi-ply recommended
 - 2/ lag top, back, and one sidewall with 12-18mm cotton or wool felt or similar. Avoid acoustic foam
 - 3/ bracing is optional but recommended
 - 4/ don't forget to open up the back of the driver cut-out



Pluvia Eleven Compact Monitor v8

Plan 18mm | 14-july-2018
 designed by Scott Lindgren | drawn by dld
 © 2010-18 Woden Design
 Free for non-commercial use



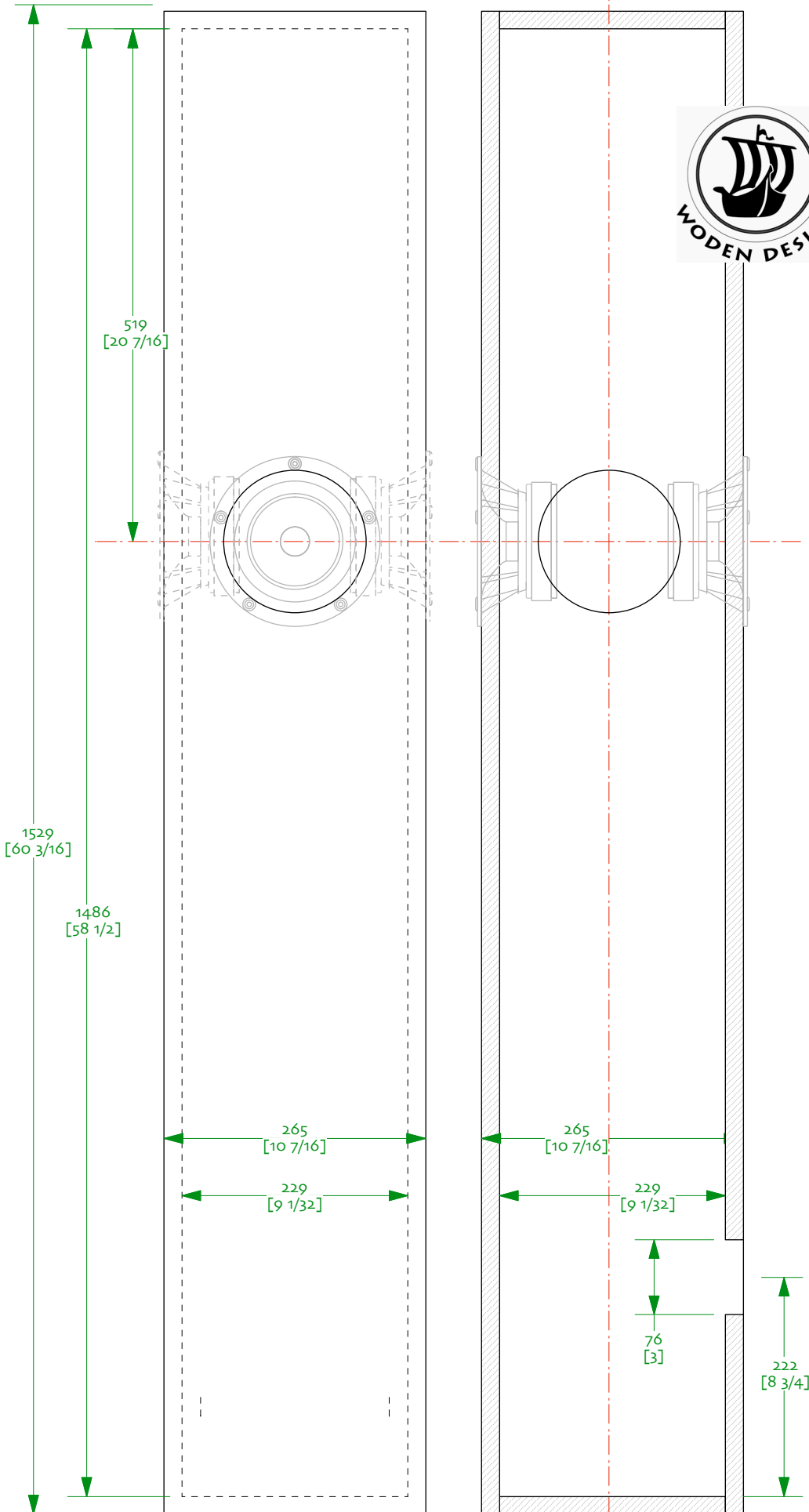
Quadrupole ML-TL ov8

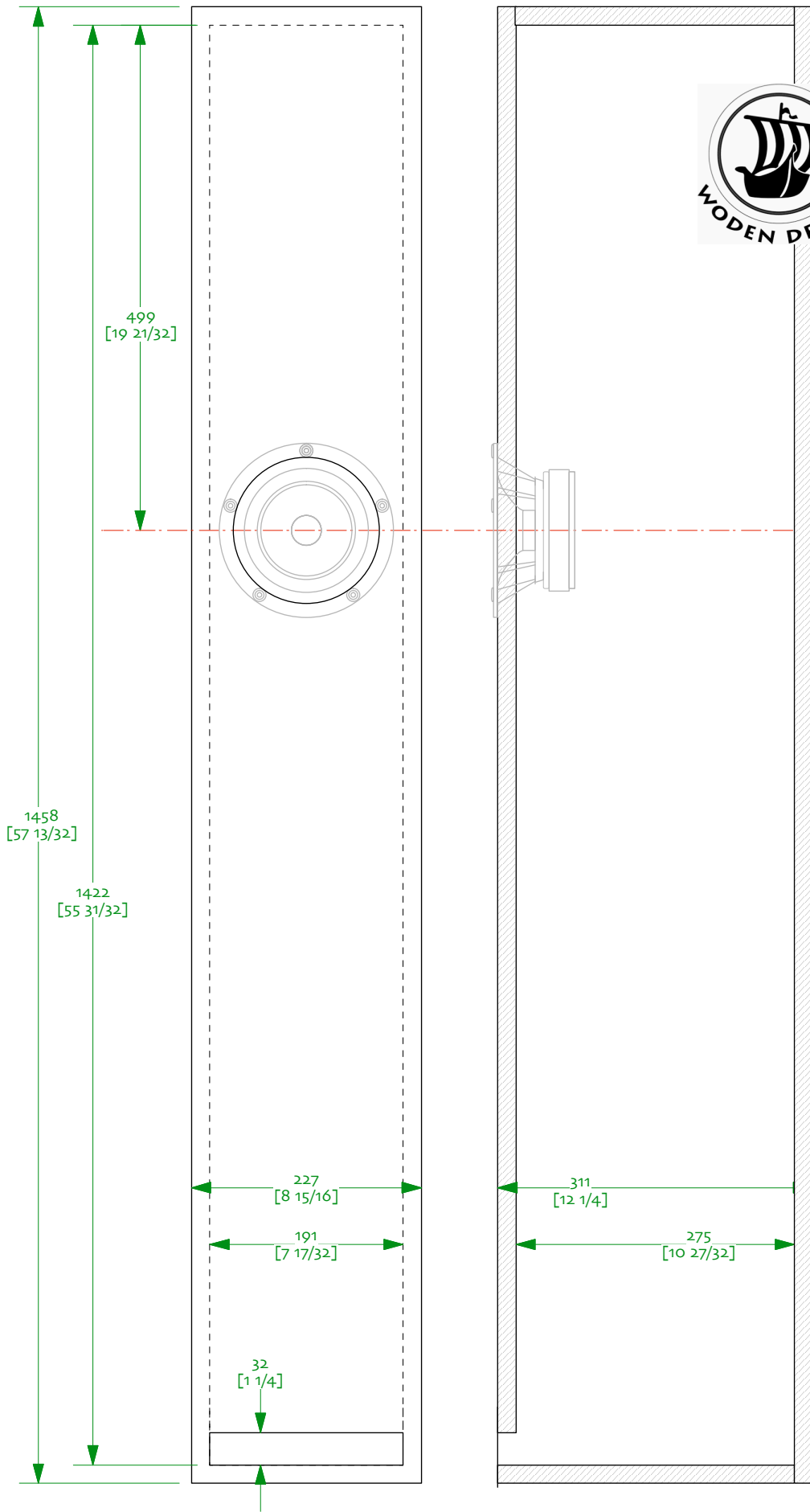
Pluvia 11 | 18mm plan
designed by S Lindgren | drawn by dld
20-july-2018
© 2017-18 Woden Design

Inspired by EPI M1000 quadratic tower speaker. A tall square cross-section tower with a Pluvia 11 on each vertical face. Forms quadrapole source with each P11 run fullrange.

Requires free-space positioning with at least 4 feet/1.3m to any from walls for proper functioning.

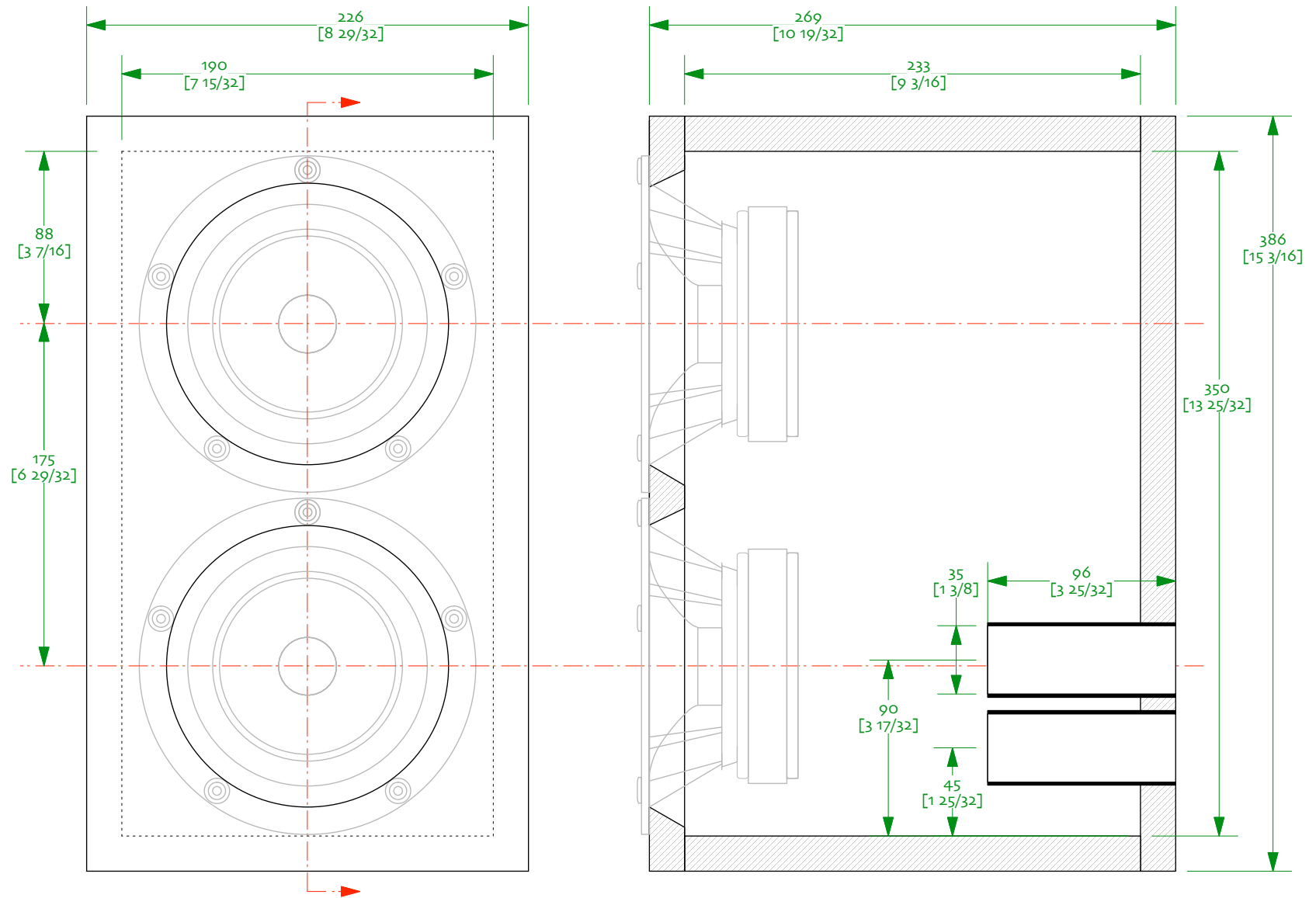
- 0/ drawn with 18mm material. Quality plywood recommended
- 1/ for 4 x Mark Audio Pluvia 11
- 2/ line all interior faces with damping material: SAE F10 felt, Ultratouch, acoustic fiberglass, or similar
- 3/ don't forget to relieve the back of the driver cutout with a chamfer or roundover
- 4/ bracing not shown but recommended. Braces should run in the direction of the line
- 5/ beveling front vertical edges recommended
- 6/ stabilizing plinth recommended
- 7/ wire drivers in series/parallel





Tower ML-TL ov8
 Pluvia 11 | 18mm plan
 designed by S Lindgren | drawn by dld
 20-july-2018
 © 2017-18 Woden Design

- 0/ drawn with 18mm material. Quality plywood recommended
- 1/ for Mark Audio Pluvia 11
- 2/ line all interior faces with damping material: SAE F10 felt, Ultratouch, acoustic fiberglass, or similar
- 3/ don't forget to relieve the back of the driver cutout with a chamfer or roundover
- 4/ bracing not shown but recommended. Braces should run in the direction of the line
- 5/ beveling front vertical edges recommended
- 6/ stabilizing plinth recommended



Notes:
 0/ designed for the 2x Mark Audio Pluvia 11
 1/ drawn with 18mm material. Quality multi-ply recommended
 2/ lag top, back, and one sidewall with 12-18mm cotton or wool felt or similar. Avoid acoustic foam
 3/ bracing is optional but recommended
 4/ don't forget to open up the back of the driver cut-out



Twin Pluvia Eleven Standmount ov8

Plan 18mm | 14-july-2018
 designed by Scott Lindgren | drawn by dld
 © 2010-18 Woden Design
 Free for non-commercial use