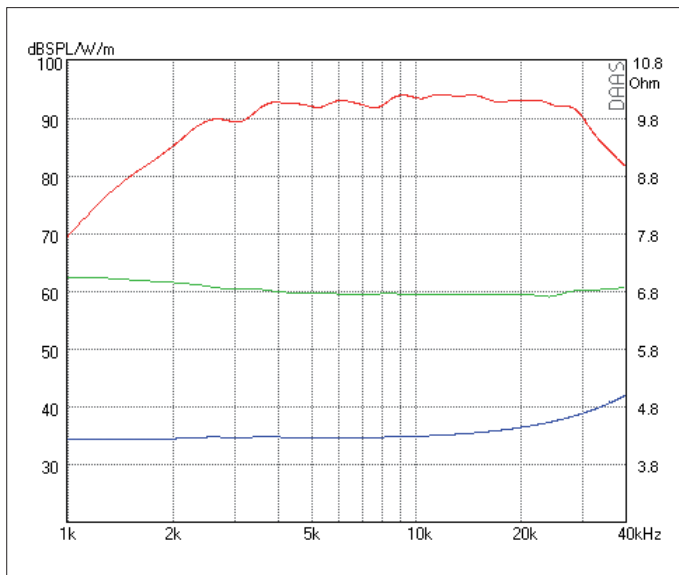


High End AMT für 3-Weg Systeme. Die 2.1-Variante ist eine 4 Ohm-Version und für die Anwendung mit einer 6dB- Weiche optimiert.

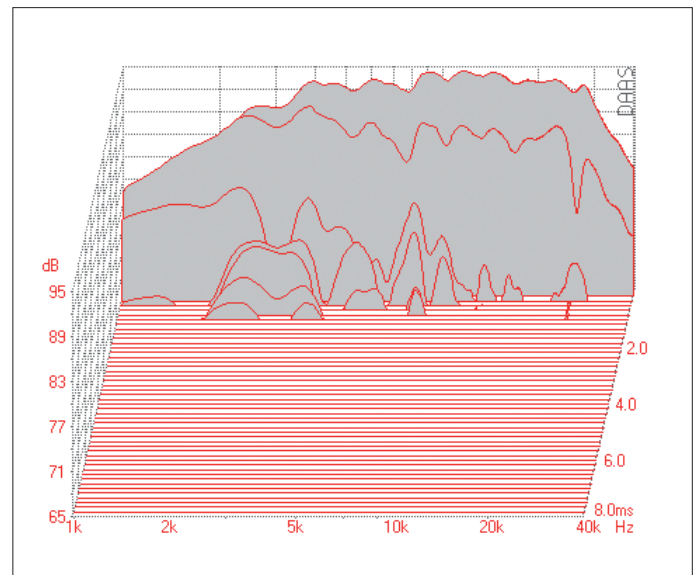
- Sehr niedrige Verzerrungen
- Sehr flache Impedanzkurve
- Gutes Rundumstrahlverhalten
- 6 dB Filter möglich

High End AMT for 3-way systems. The 2.1- type is a 4 ohm version and optimized for use with a 6dB x-over.

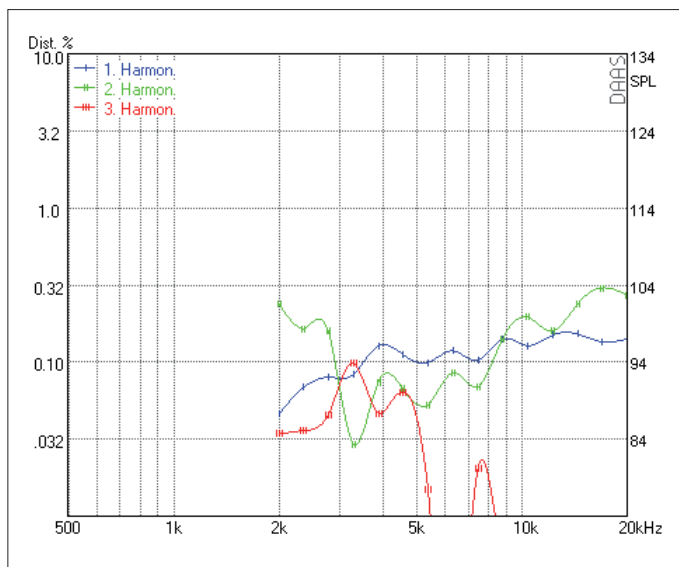
- Very low distortion
- Very flat impedance curve
- Wide spread directivity
- 6dB x-over



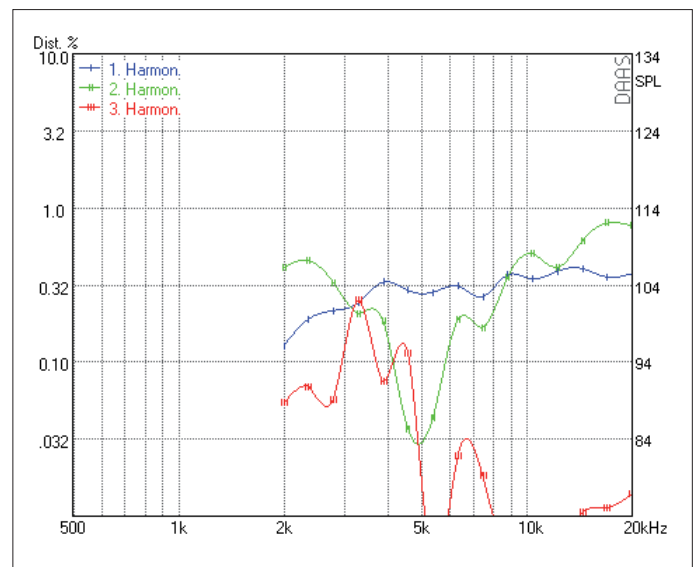
SPL 2.83 V - Phase - Impedance



Waterfall

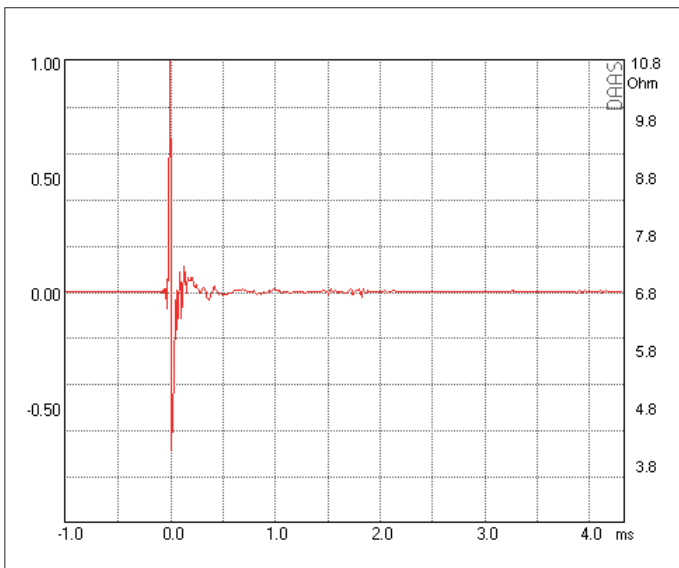
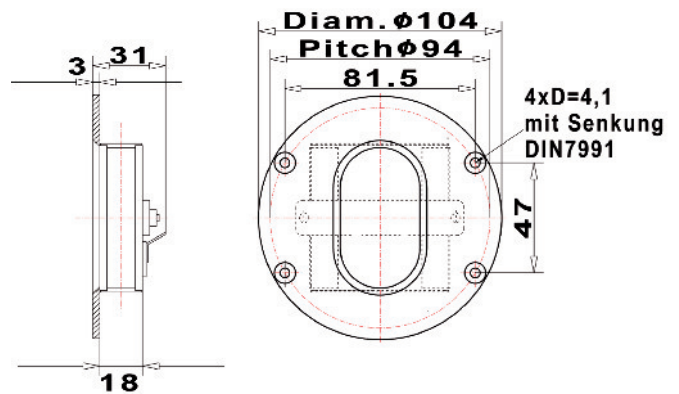


Harmonic Distortion 2.83 V

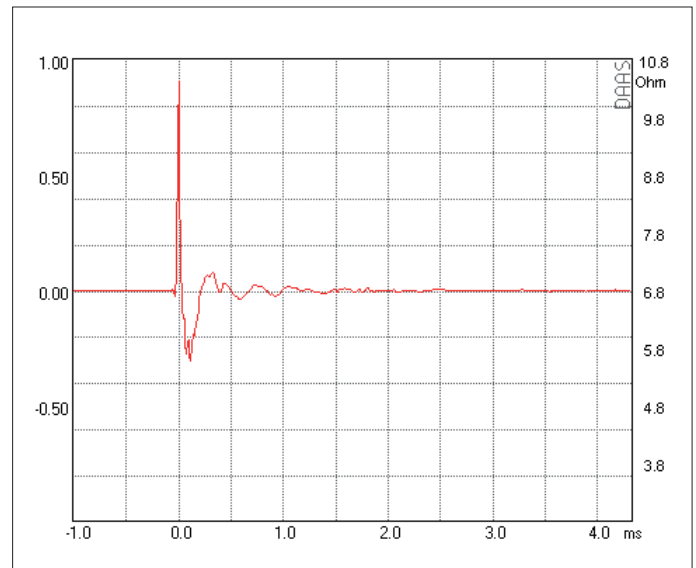


Harmonic Distortion 105 dB

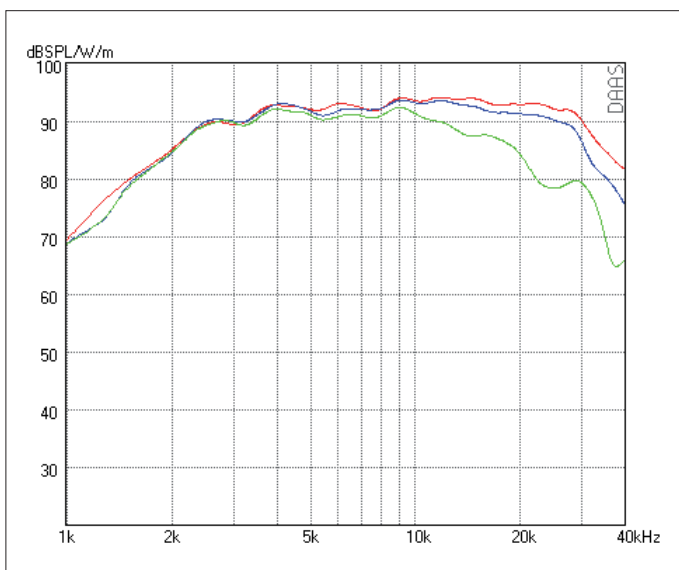
RESISTANCE	NOMINAL 4 OHM
Zo 4.3 OHM • Zmin 4.2 OHM • RE 4.2 OHM	
SENSITIVITY @ 2.83 V	93 dB
FREQUENCY RESPONSE / -6 dB	2300 Hz – 32 kHz
POWER HANDLING	120 W
RESONANCE FREQUENCY / FS	2600 Hz
RECOMMENDED CROSSOVER / 6 dB	3000 Hz
RECOMMENDED CROSSOVER / 12 dB	3000 Hz
DISPERSION HORIZONTAL / 15 kHz / -6 dB	60°
DIAPHRAGM AREA	1260 mm ²
MAGNET MATERIAL	NEODYMIUM
FACE PLATE	3 mm Anodized Aluminum



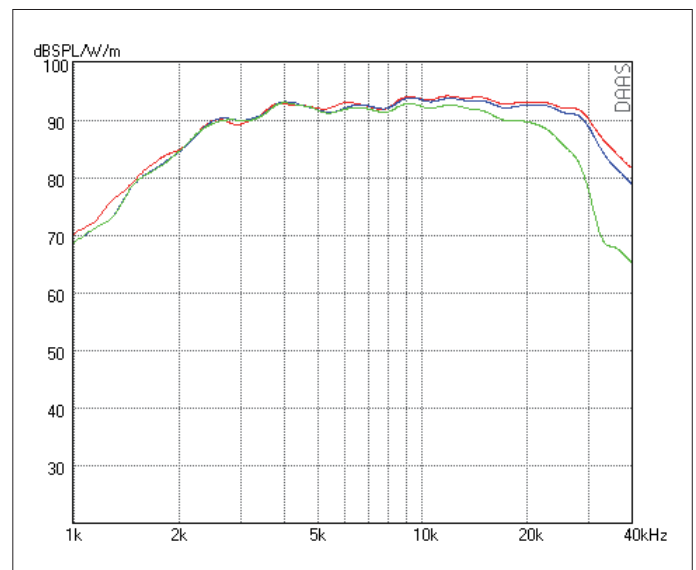
Impulse Response



Step Response



SPL HORIZONTAL 0° - 15° - 30°



SPL VERTIKAL 0° - 5° - 15°