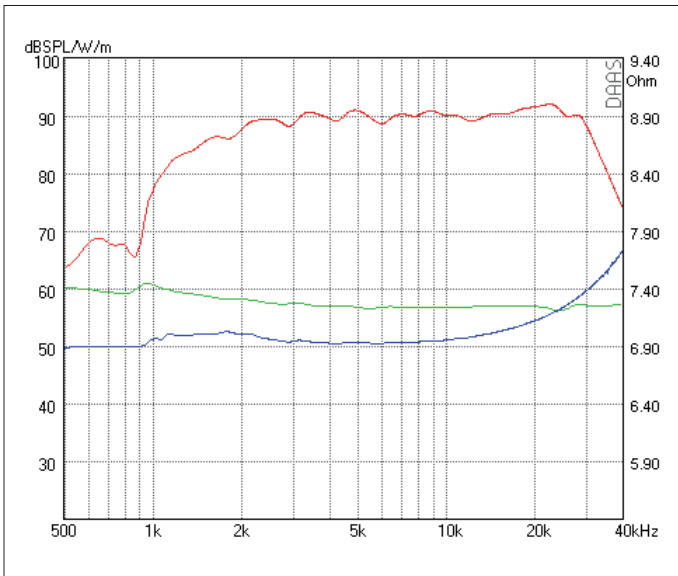


High End AMT für 2-Weg Systeme. Mit seinen Wirkungsgrad von 90 dB benötigt er die geringste Pegelanpassung. Sein hoher Endschalldruck genügt höchsten Anforderungen.

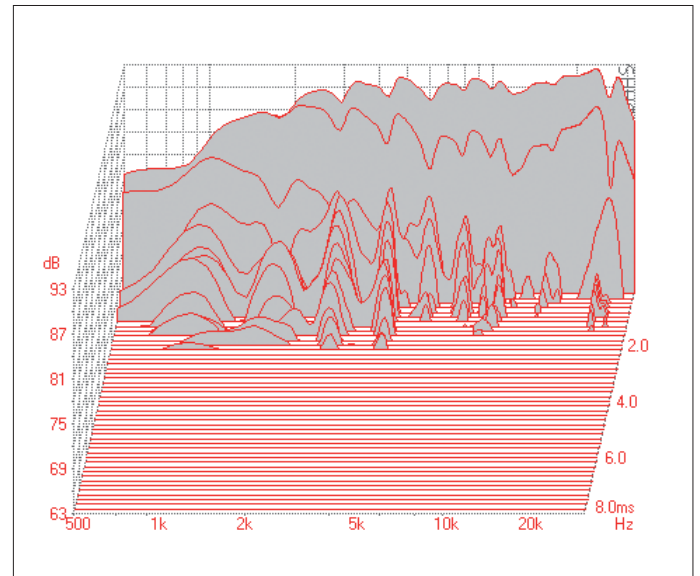
- Sehr niedrige Verzerrungen • Sehr flache Impedanzkurve
- Gutes Rundumstrahlverhalten • Tiefe Trennfrequenz

High End AMT for 2-way systems. With its efficiency of 90 dB this AMT needs almost no level adjustment. Its high SPLmax meets the highest requirements.

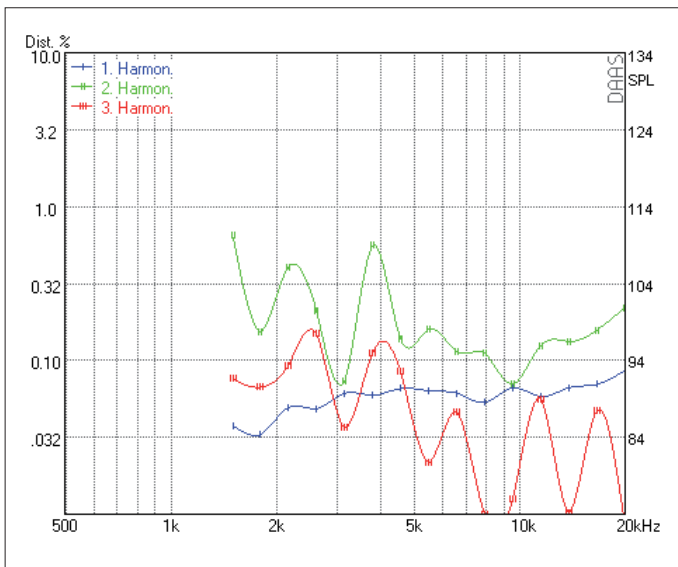
- Very low distortion • Very flat impedance curve
- Wide spread directivity • Low x-over frequency



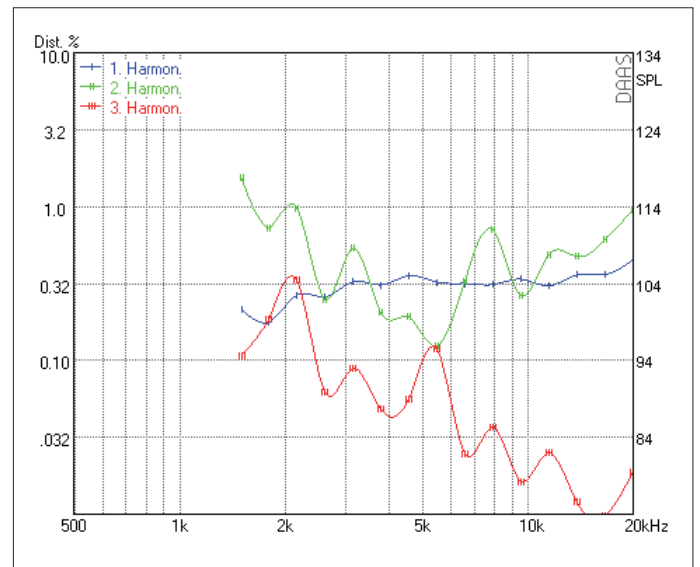
SPL 2.83 V - Phase - Impedance



Waterfall

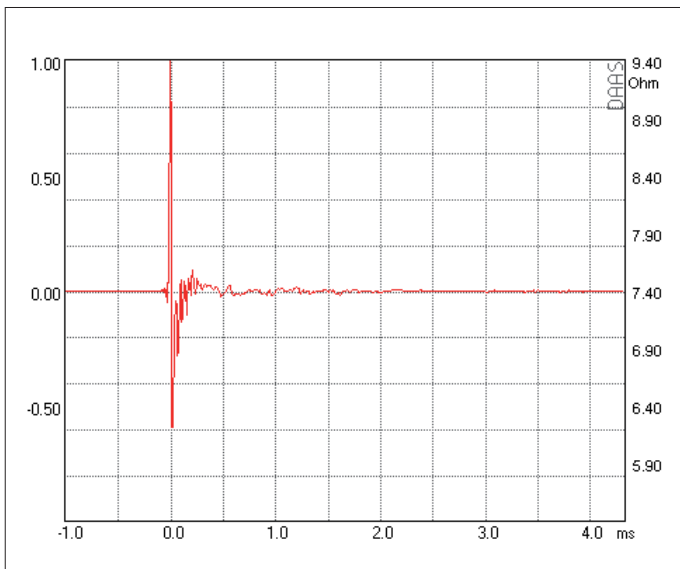
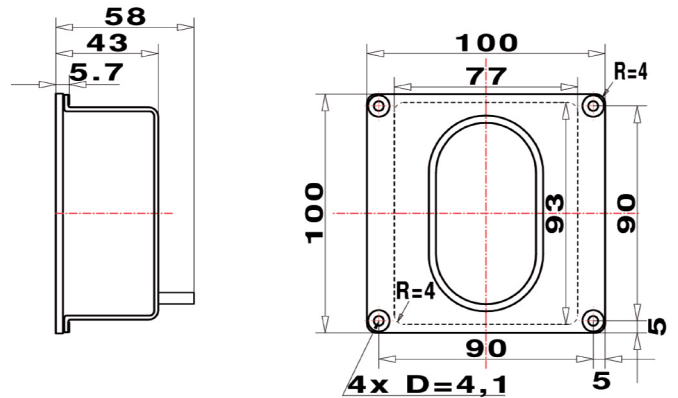


Harmonic Distortion 2.83 V

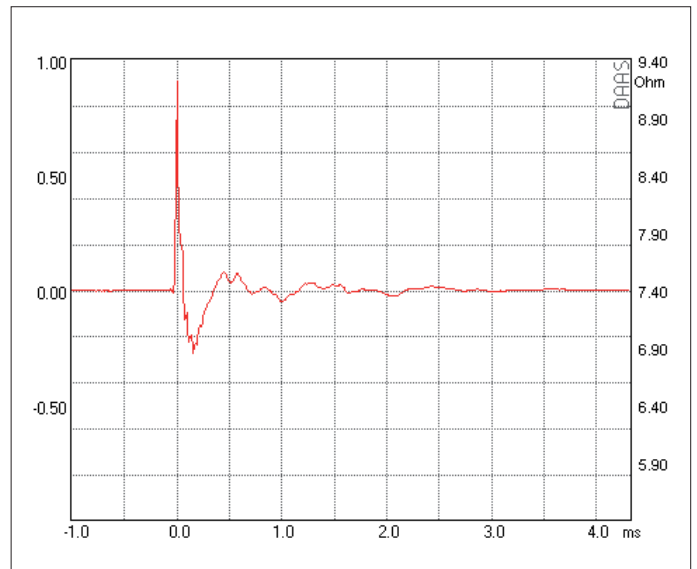


Harmonic Distortion 105 dB

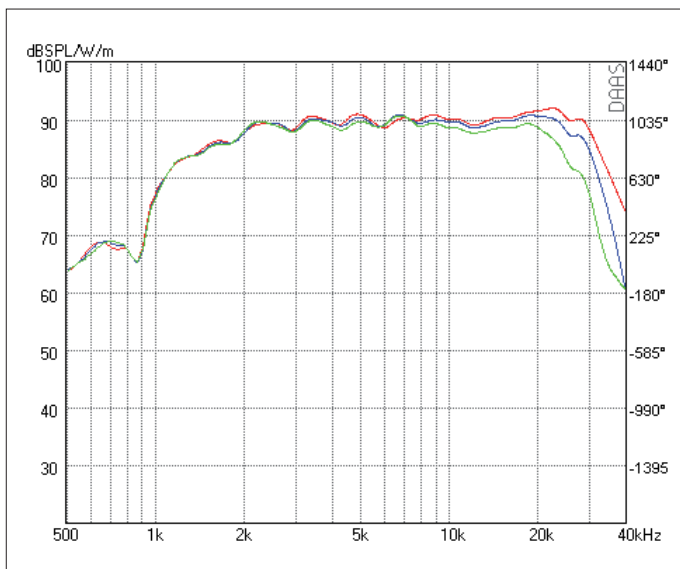
RESISTANCE	NOMINAL 6 OHM
Zo 6.8 OHM • Zmin 6.6 OHM • RE 6.6 OHM	
SENSITIVITY @ 2.83 V	90 dB
FREQUENCY RESPONSE / -6 dB	1300 Hz – 33 kHz
POWER HANDLING	125 W
RESONANCE FREQUENCY / FS	1700 Hz
RECOMMENDED CROSSOVER / 6 dB	2700 Hz
RECOMMENDED CROSSOVER / 12 dB	2200 Hz
DISPERSION HORIZONTAL / 15 kHz / -6 dB	60°
DIAPHRAGM AREA	1755 mm ²
MAGNET MATERIAL	NEODYMIUM
FACE PLATE	3 mm Anodized Aluminum



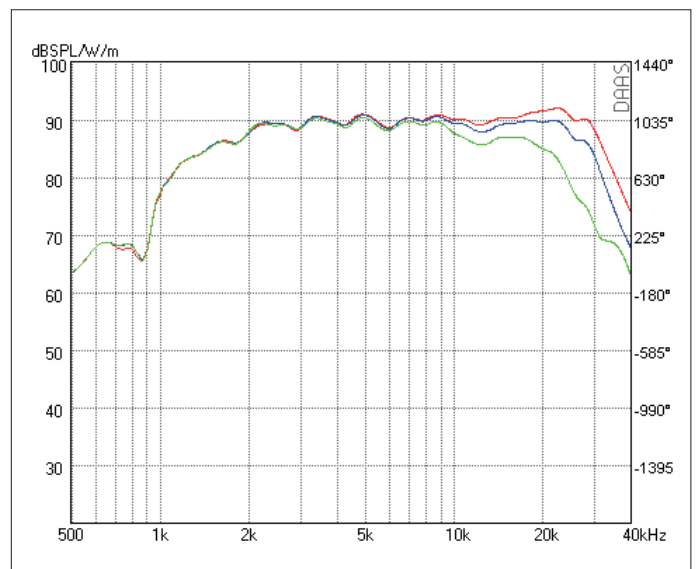
Impulse Response



Step Response



SPL HORIZONTAL 0° - 15° - 30°



SPL VERTIKAL 0° - 5° - 15°