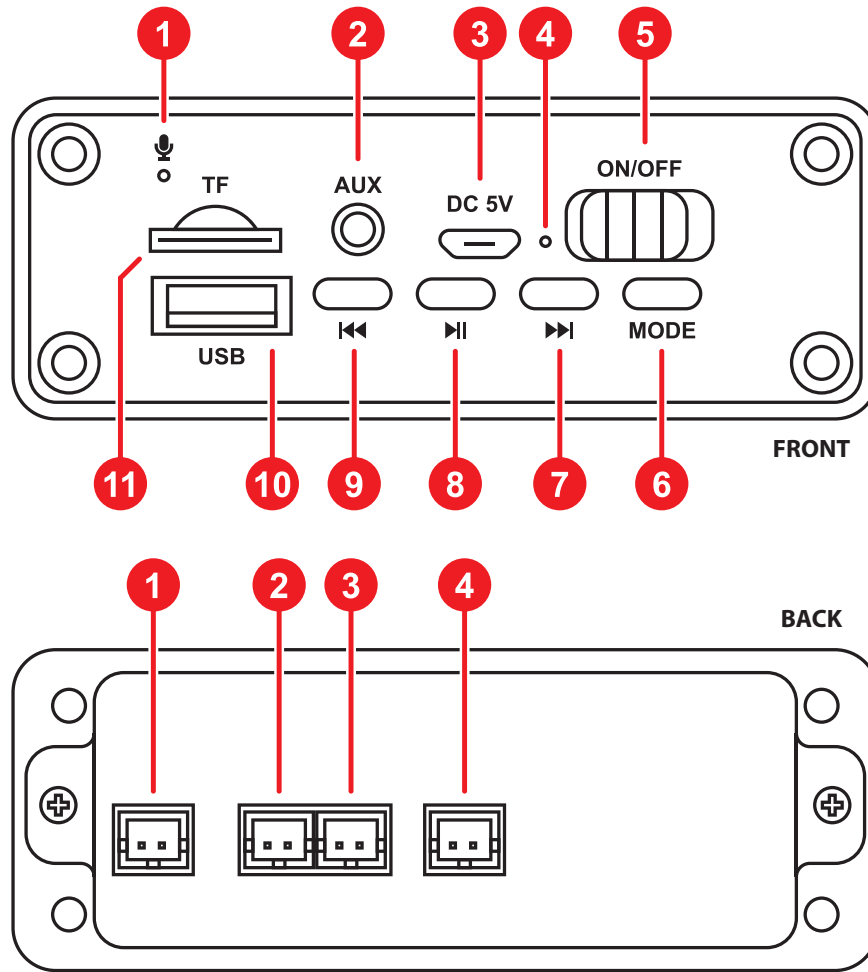


Bluetooth 5.0, FM, Media Player Faceplate

2 x 3W 5 VDC Amp Board

Quick Reference Guide



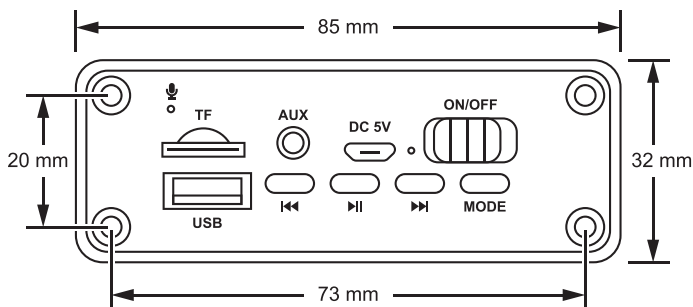
FRONT

1. Microphone
2. 3.5 mm stereo input Jack
3. Micro-USB input power/charge port
4. Bluetooth LED - fast flash searching, slow flash paired (JQ-BT)
5. On/Off switch
6. Input mode button
7. Hold for volume up, quick press next track or next stored FM station
8. Pause/play button, hold to search for FM stations that will be stored
9. Hold for volume down, quick press previous track or previous stored FM station
10. USB port for flash drive media player
11. Trans flash/micro-SD card media player

BACK

1. 3.7V battery/4-6 VDC power input JST PH2.0 jack
2. Right JST PH2.0 speaker jack
3. Left JST PH2.0 speaker jack
4. JST PH2.0 antenna wire jack

DIMENSIONS



1/2" (14 mm) drill bit reamed out a little will help here, then cut out the rest. Total center cross cut with notches is 79mm.

