

FEATURES

- Vented cast aluminium chassis
- Proprietary cone material with EGYPTIAN POPYRUS made in house
- Powerful low distortion neodymium motor system with extended copper sleeve
- Low profile surround for minimum high frequency diffraction
- Light weight CCAW voice coil on fibre glass former
- Long life silver lead wires
- Soft dome tweeter with neodymium motor, copper cap and CCAW voice coil

Specs Woofer :

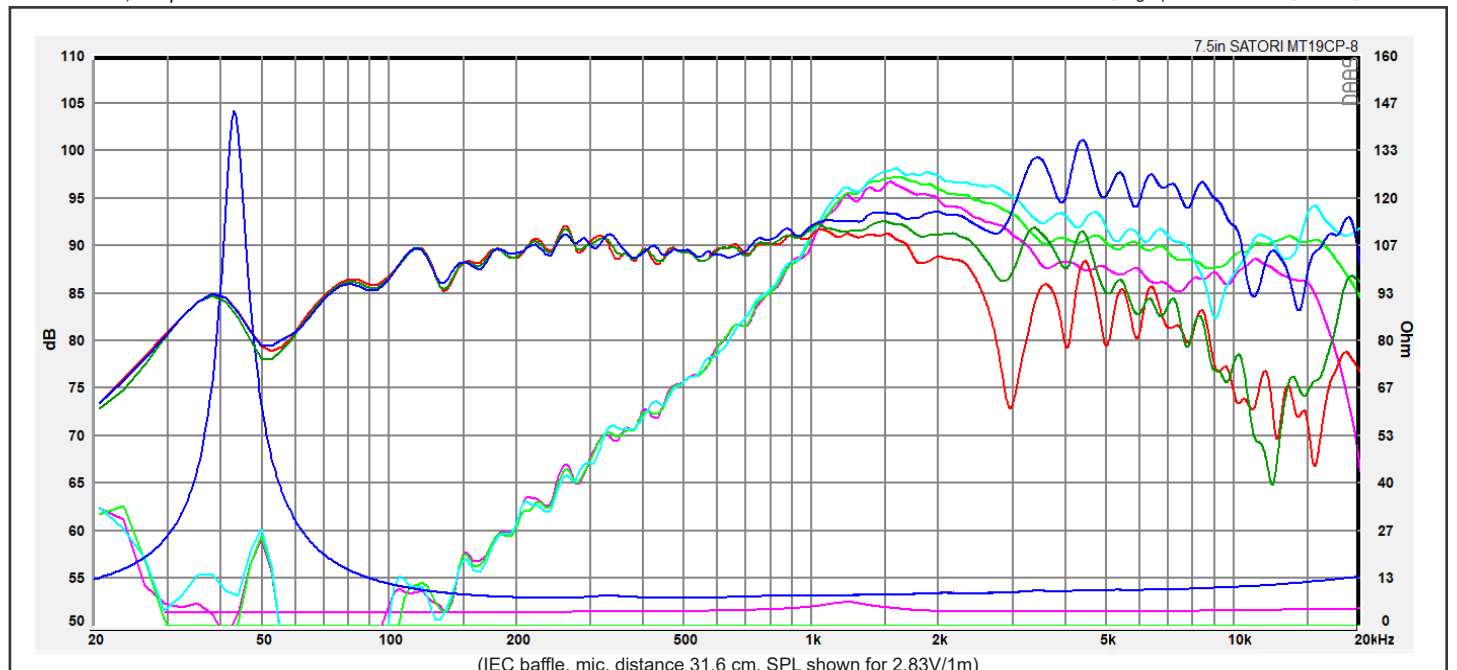
Nominal Impedance	8 Ω	Free air resonance, Fs	43 Hz
DC resistance, Re	6.5 Ω	Sensitivity (2.83V/1m)	90 dB
Voice coil inductance, Le	0.12 mH	Mechanical Q-factor, Qms	6.54
Effective piston area, Sd	152 cm ²	Electrical Q-factor, Qes	0.33
Voice coil diameter	38.6 mm	Total Q-factor, Qts	0.31
Voice coil height	13.2 mm	Moving mass incl. air, Mms	12.1 g
Air gap height	6 mm	Force factor, Bl	8.05 Tm
Linear coil travel (p-p)	7.2 mm	Equivalent volume, Vas	37.1 liters
Magnetic flux density	1.1 T	Compliance, Cms	1.13 mm/N
Magnet weight	0.16 kg	Mechanical loss, Rms	0.5 kg/s
Net weight	1.56 kg	Rated power handling*	60 W

* IEC 268-5, T/S parameters measured on drive units that are broken in.

Specs Tweeter :

Nominal Impedance	4 Ω
DC resistance, Re	3.7 Ω
Voice coil diameter	25.4 mm
Voice coil height	1.3 mm
Air gap height	2.5 mm
Free air resonance, Fs	1200 Hz
Sensitivity (2.83V/1m)	90 dB
Rated power handling*	60 W
Magnetic flux density	1.2 T
Magnet weight	0.016 kg
Net weight	0.083 kg

* IEC 268-5, high-pass Butterworth, 3.5 Hz, 12 dB/oct.



Response Curve :

- (Blue) : on axis
- (Green) : 30° off-axis
- (Red) : 60° off-axis (Woofer)
- (Blue) : on axis
- (Green) : 30° off-axis
- (Red) : 60° off-axis (Tweeter)

REV. 0 (05.07.2023)