

Mid-Power Multichannel Series

4 x 100 Watt 4 Ohm

Class D

Audio Amplifier Board - T-AMP

(AA-AB33182)



Key Features:

- Output Power
100W@4Ohm 27V DC THD+N 10%
69W@4Ohm 27V DC THD+N 1%
- Active Indicator
- BTL Architecture
- Low Noise Cooling Fan
- Overcurrent Protection
- Overtemperature Protection
- Optimized Heatsink Design
- 4-screw Easy Installation
- Weight: 600g/1.32 lbs (±10%)
- Size: 6.00 x 4.50 x 1.30 inches

Distributors:



All these boards are per-tested with our power supply solution to comply with FCC and CE. For all customers who need those information, please contact our distributor or Sure Electronics. RoHS compliant will need an MOQ of 1000pcs per order.

Ready for:



Contact info

• Email:
info@sure-electronics.com



Electrical Specifications

Specifications typical @ +25°C, powered by 27V DC, unless otherwise noted. Specifications subject to change without notice.

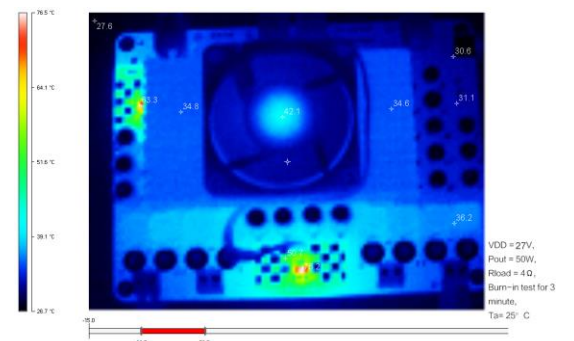
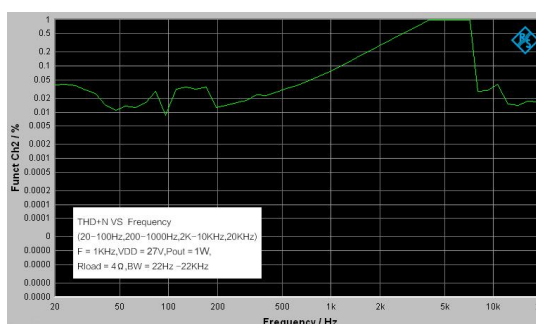
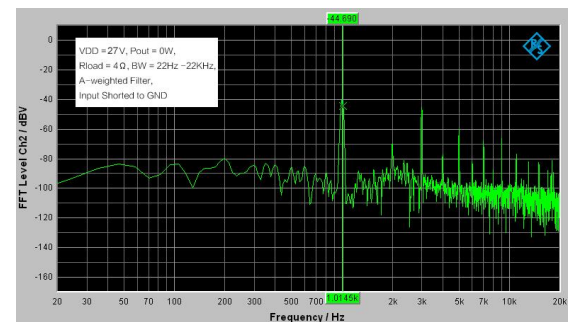
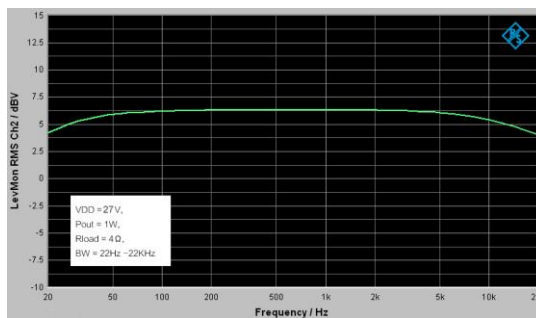
| Parameter | Conditions | Min. | Typ. | Max. | Units |
|------------------------|-----------------------------|------|------|------|-------|
| Power Supply | - | 15 | 27 | - | VDC |
| Idle Power | SD Floating, FAN ON | - | 10.6 | 20 | W |
| | SD Floating, FAN OFF | - | 8.4 | 15 | W |
| Standby Power | SD Connected to GND, FAN ON | - | 2.7 | 6 | W |
| Maximum Current | 400W @ 4Ohm | - | 16.1 | - | A |
| Efficiency | 100W @ 4Ohm | 90 | 92 | 95 | % |
| Minimum Load Impedance | - | - | 4 | - | Ω |
| Switching Frequency | SD Floating | - | 760 | - | KHz |

Audio Performance

Specifications typical @ +25°C, powered by 27V DC, unless otherwise noted. Specifications subject to change without notice.

| Parameter | Conditions | Min. | Typ. | Max. | Units |
|------------------------|-------------------------------------|------|------|------|-------|
| Gain | - | 30 | 32 | 34 | dB |
| Input Sensitivity(RMS) | @4Ω, 100W, 1KHz | - | 520 | - | mV |
| Input Impedance | - | - | 10 | - | KΩ |
| Output Power | @4Ω THD+N 1% | - | 69 | - | W |
| | @4Ω THD+N 10% | - | 100 | - | W |
| Bandwidth @ ±3dB | @4Ω | 20 | - | 20K | Hz |
| THD | @4Ω, 1W, 1KHz | - | 0.03 | - | % |
| | @4Ω, 10W, 1KHz | - | 0.09 | - | % |
| Output Noise Level | A-weighting, Input Connected to GND | - | 211 | - | μV |
| SNR | 69W @4Ω THD+N 1% | - | 90 | - | dB |

Typical Performance Graphs



All parameters were tested with Rohde & Schwarz UPV audio analyzer (AES17 filter enabled) and Audio Precision AUX0025 filter. For authorized distributors and OEM customers who need more detailed performance graphs and parameter settings, please send an inquiry e-mail to us. (Not available for retail customers)

Model Selection Guide

| Model Number | Output Power | Power Supply Range | Typical Load | Amplifier IC | Dimensions |
|--------------|--------------|--------------------|--------------|--------------|------------|
| AA-AB35281 | 3 X 200Watt | DC 24-36V | 3Ω | T-AMP | 6"X4.5" |
| AA-AB33184 | 4 X 100Watt | DC 14V-36V | 6Ω | TDA7498 | 6"X4.5" |
| AA-AB33182 | 4 X 100Watt | DC 15-27V | 4Ω | T-AMP | 6"X4.5" |
| AA-AB34181 | 6 X 100Watt | DC 14V-36V | 6Ω | TDA7498 | 6"X4.5" |

7. Suggested power supply solution:

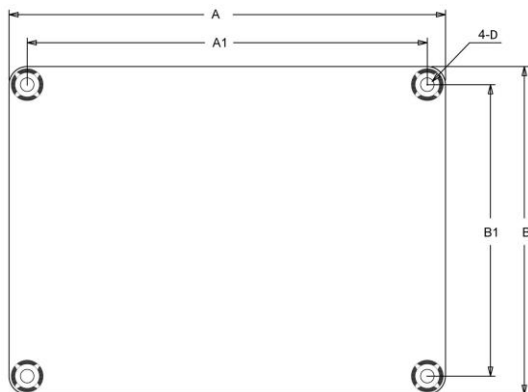
Mean Well MW 27V 13A 350W AC/DC Switching Power Supply NES-350-27 (PS-SP11155)

If you have other power supply requirements, please feel free to contact us.

Notes:

- The output power is rated at the condition THD+N 10%, 1kHz sine wave.
- All amplifier boards don't employ power supply reverse polarity protection. Stresses beyond the power supply range maximum ratings may cause permanent damage.
- None typical load may cause rating power reduction.
- Dimensions mean length and width of PCB only, excluding excessive part out of the PCB outline.
- All parameters were tested with Rohde & Schwarz UPV audio analyzer (AES17 filter enabled) and AP AUX0025 filter. Linear Power Supply units were used for testing.
- Sure Electronics promises all standard products life cycle more than 5 years. Sure Electronics reserves the right to update the version without notice. All the products sent to retail customers are the latest version. We will provide back-to-order service (100 Pieces MOQ needed) for our distributors in 5 years.

Mechanical Dimensions

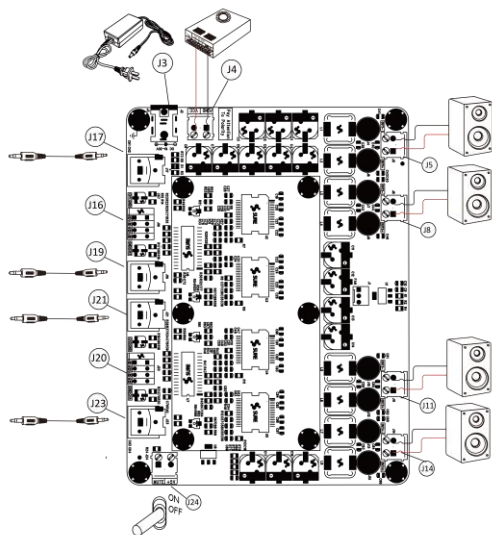


| Dimensions | A (inch/mm) | A1 (inch/mm) | B (inch/mm) | B1 (inch/mm) | D (inch/mm) |
|------------|----------------|-----------------|----------------|-----------------|----------------|
| | 6.00/152.40 | 5.60/142.24 | 4.50/114.3 | 4.10/104.14 | 0.15/3.8 |

Notes:

- All dimensions are typical in inches/mm
- Tolerance x.xx = ±0.02(±0.50)
- Height:
AA-AB33184, AA-AB33182: 1.30inch/33.02mm
AA-AB35281: 1.48inch/37.60mm
AA-AB34181: 1.53inch/38.90mm

Connections



Power Supply Connector:

- J3 DC Jack 5.5mm/2.5mm
- J4 Terminal Block RJ128 (optional)

| Pin | Function |
|-----|----------|
| ■ | GND |
| ● | VCC |

Audio Input Connector:

- J17, J19, J21, J23 RCA Jack
- J16, J20 RJ141V (Optional)

| | Pin | Function |
|-----|-----|----------|
| J16 | ■ | CH1 |
| | ● | GND |
| | ● | GND |
| J20 | ■ | CH2 |
| | ● | GND |
| | ● | GND |
| | ● | CH4 |

Mute Control Connector:

- J24 Terminal Block RJ128

| Pin | Function |
|-----|----------|
| ■ | MUTE |
| ● | +5V |

Speaker Output Connector:

- J5, J8, J11, J14 Terminal Block RJ128

| | Pin | Function |
|----|-----|----------|
| J5 | ■ | OUT1+ |
| | ● | OUT1- |
| J8 | ■ | OUT2+ |
| | ● | OUT2- |

| | Pin | Function |
|-----|-----|----------|
| J11 | ■ | OUT3+ |
| | ● | OUT3- |
| J14 | ■ | OUT4+ |
| | ● | OUT4- |

Sure Electronics

Make Your Audio Application Simple!

NO.9, Weidi Road, Xianlin University City, Qixia District,
Nanjing, Jiangsu Province, P.R.C

www.sure-electronics.com

www.wondom.com

Mail: store@sure-electronics.com

Skype: surewebstore

