



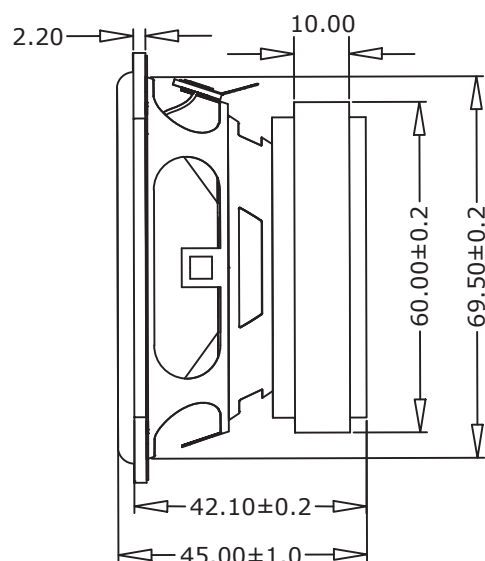
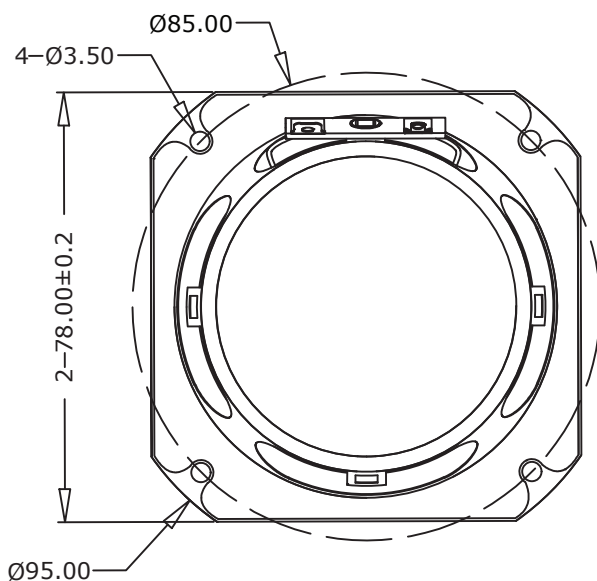
SUFR7010

2.75" Full Range Speaker Unit

The SUFR7010 is a 2.75-inch 4-ohm 10 Watt full range speaker with powerful Ferrite motor.

Features:

- Paper cone equipped with special-designed large roll rubber surround for a dynamic linear response to high excursion input signals.
- High sensitivity at voice range and low cost.
- Four mounting holes on the front frame for easy installation.
- Venting under the spider to aid the cooling of the motor.



T-S Parameters:

Resonance frequency [fs]	100Hz
Mechanical Q factor [Qms]	2.52
Electrical Q factor [Qes]	0.97
Total Q factor [Qts]	0.70
Force factor [Bl]	2.58Tm
Mechanical resistance [Rms]	0.65kg/s
Moving mass [Mms]	2.62g
Compliance [Cms]	82.52mcm/N
Effective diaph. diameter [D]	64mm
Effective piston area [Sd]	32.67cm ²
Equivalent volume [Vas]	1.25L
Sensitivity (2,83V/1m)	79dB

Power Handling:

Rated power input (IEC 268-5)	10W
Max power input (IEC 268-5)	15W

Electrical Data:

Normal impedance [Zn]	4.27Ω at 1kHz
Minimum impedance [Zmin]	3.90Ω
Maximum impedance [Zo]	16.60Ω
DC resistance [Re]	3.72Ω
Voice coil inductance [Le]	0.18mH at 1kHz

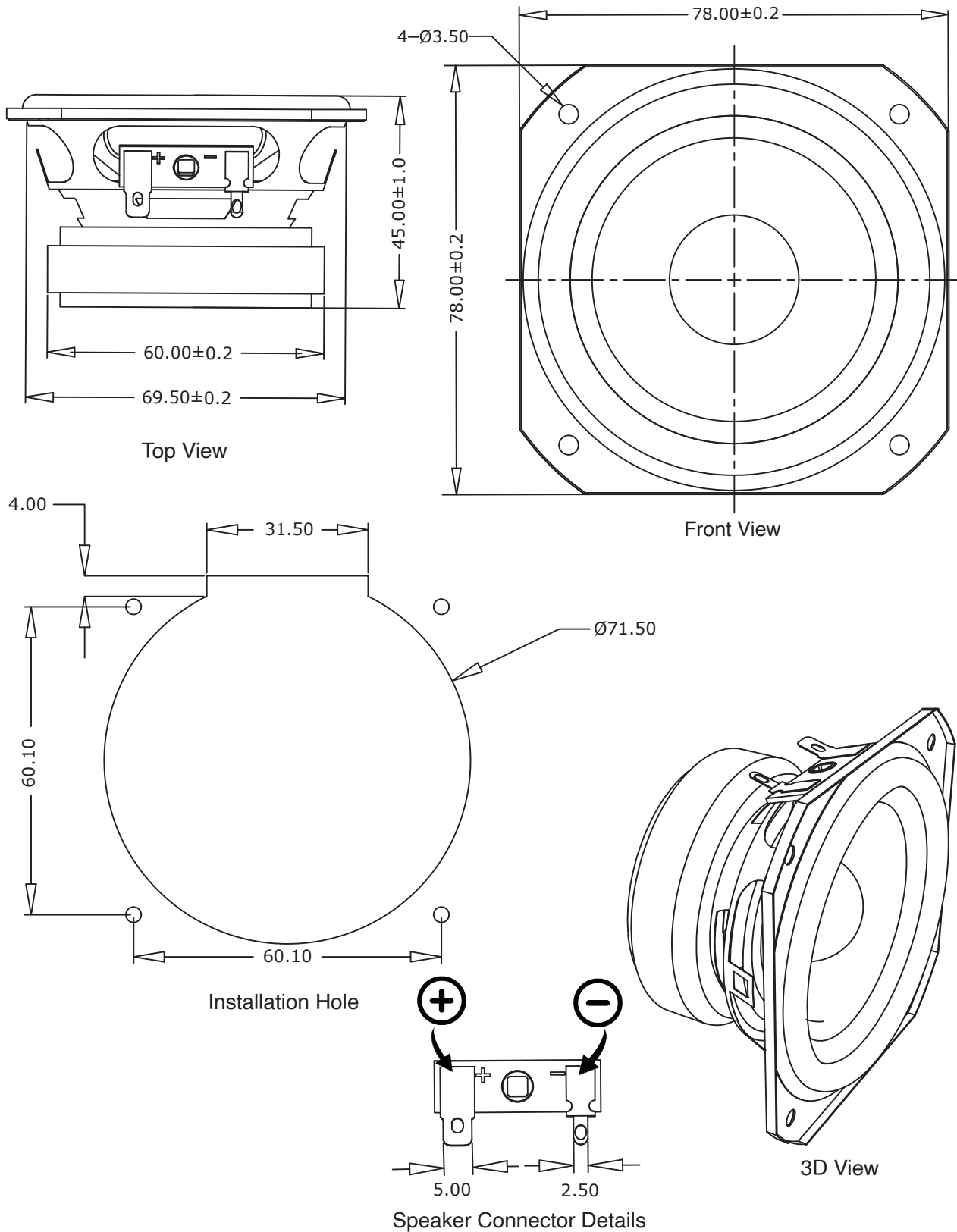
Mechanical Data:

Voice coil diameter	20.4mm
Voice coil height	6mm
Voice coil layer	1
Gap height	3.5mm
Linear excursion	±1.0mm
Max mech. excursion	±3.0mm
Unit weight	286g
Driver displacement volume	0.03L



Mechanical Drawing

(Nominal Dimensions, mm)



Note: All views and illustration for speaker connector are not 1:1 scale.

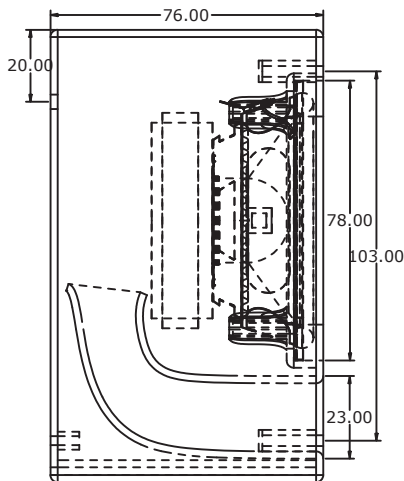
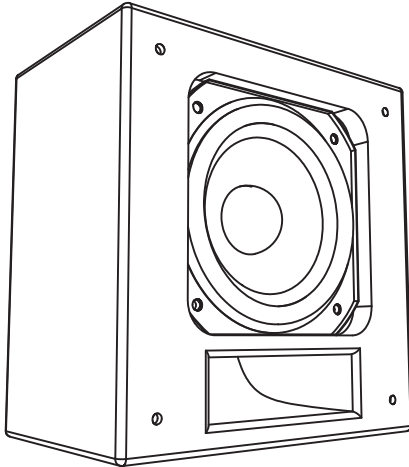


Box Properties 1

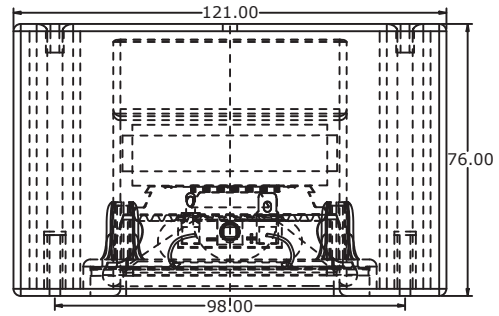
Type: Vented Box
Shape: Prism

Box Parameters

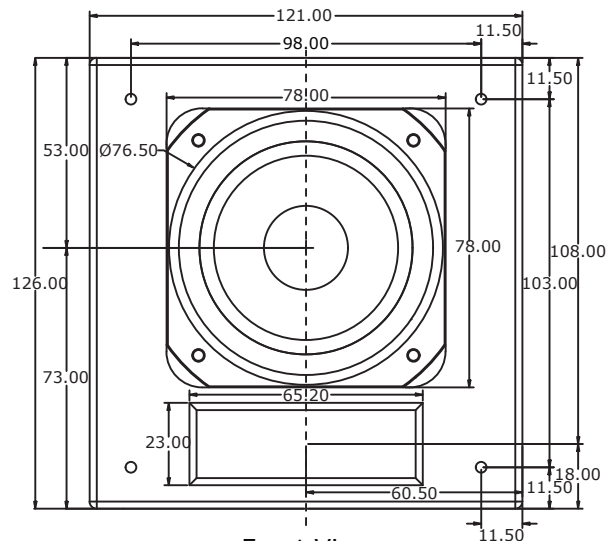
Calculated Vb = 3.52lts
Calculated V (total) = 3.61lts
Actual Vb = 1.03lts
Qtc = 0.81
F3 = 57.83Hz
Fill = Normal



Side View



Top View

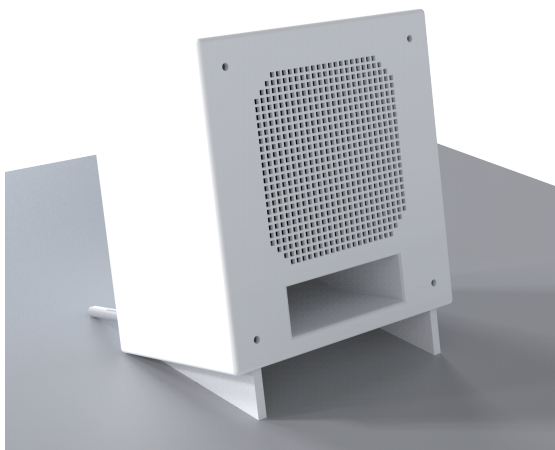


Front View

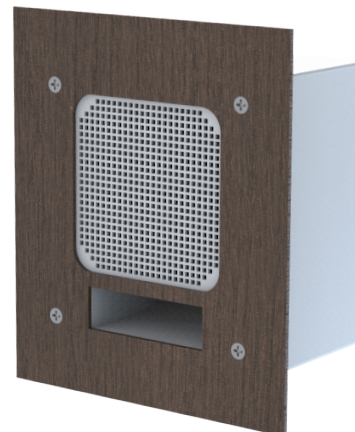
Notes:

1. This speaker box is designed and optimized for panel mounting, also compatible with desktop use.
2. 3D model is provided for free in our resale website www.sure-electronics.com.
3. Actual volume is different with calculation value, but tested and verified, it is an optimized value after prototypes.
4. This model might work with 2.75 inch full range units from other brands, but performance is not guaranteed.
5. This speaker box unit is for sale and not a standard accessory, customer can find in our website.

Desktop Application



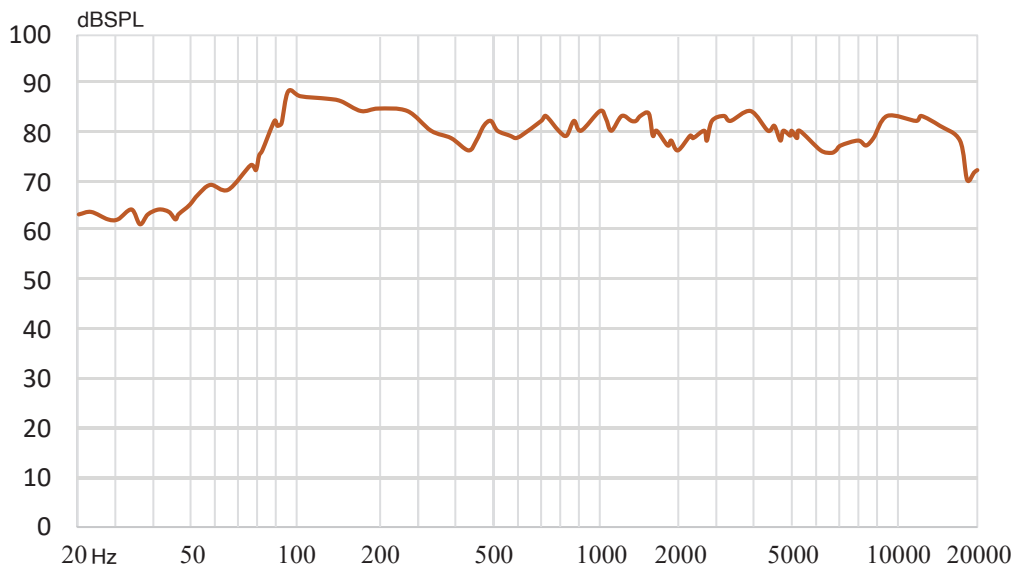
Panel Mount Application





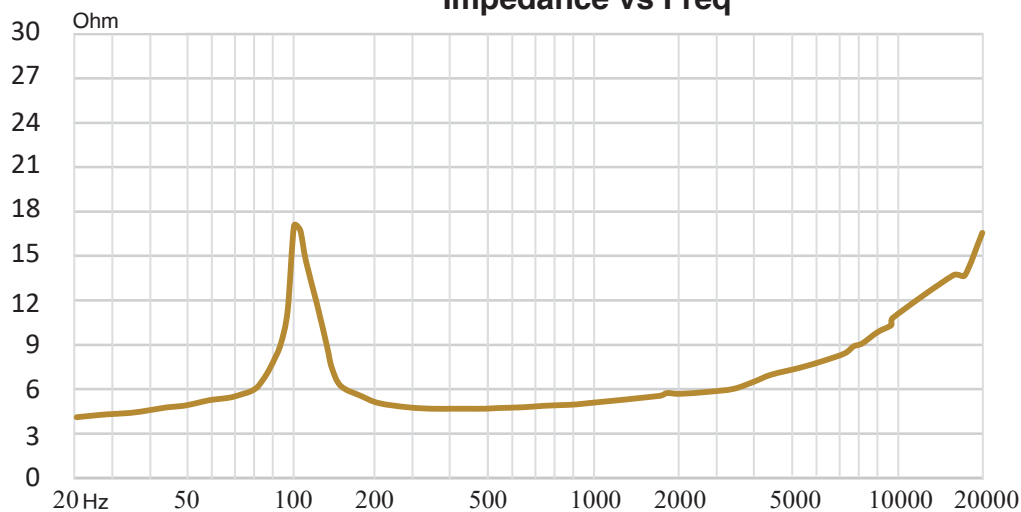
Frequency Response

SPL vs Freq



Impedance Curve

Impedance vs Freq



Distributed by:



Sure Electronics Co., Ltd.
Professional Industrial Audio Solution Provider
3F, Building F6, No. 9, Weidi Road,
Xianlin, Qixia Dist., Nanjing, China.
+86(25)8526-0046 | info@sure-electronics.com

To view our products and purchase,
please visit our website:
store.sure-electronics.com

Designed by:



58-7-2, Jalan Cantonment,
Wisma Fortune Heights, 10250, Pulau Pinang, Malaysia.
+60(4)2189323 | info@wondom.com

To view our products, please visit our website:
www.wondom.com



store.sure-electronics.com



www.wondom.com

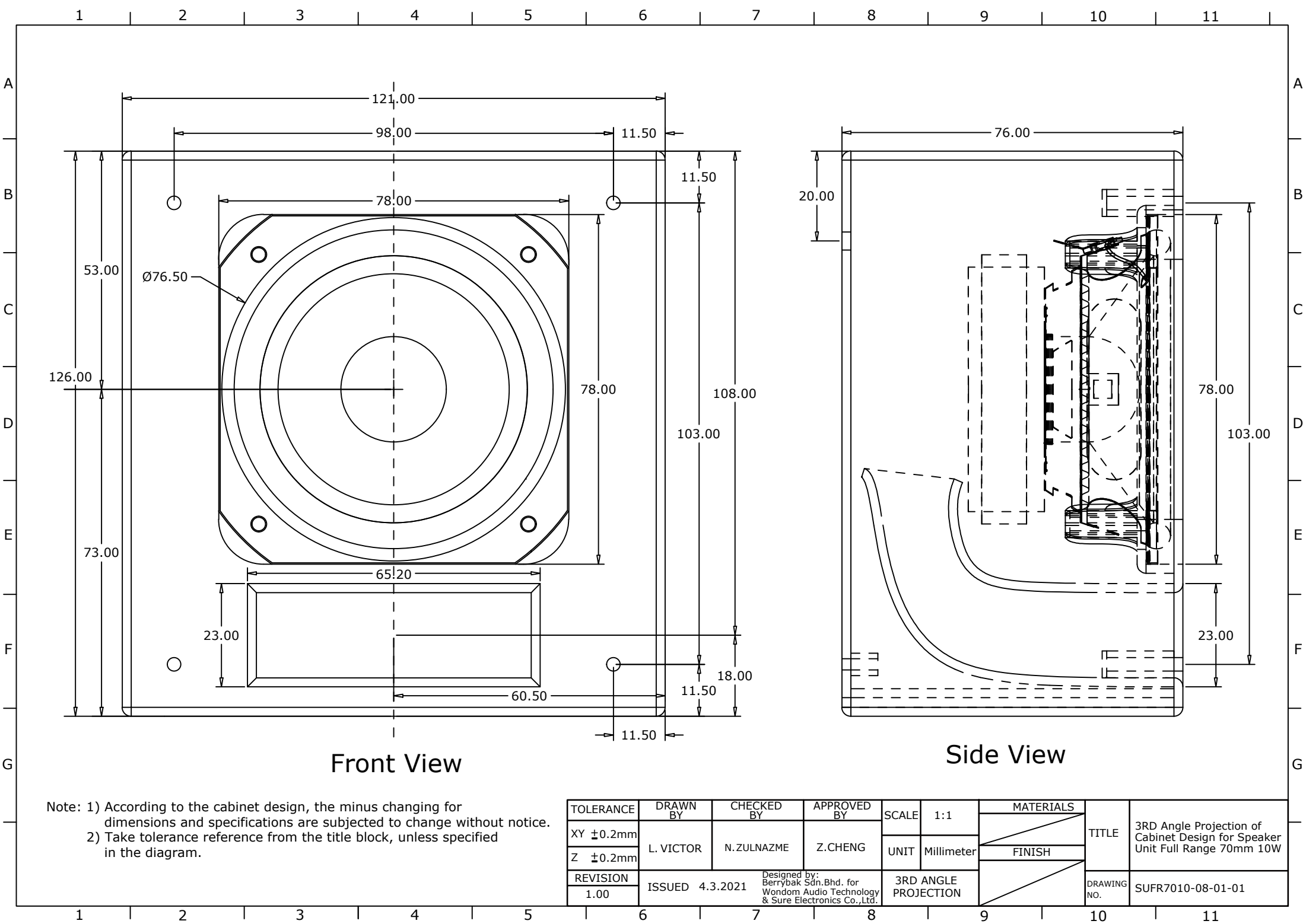
RoHS

- MOQ and SPQ is 2pcs per small cardboard box for retail, incremental is one SPQ 2pcs.
- MOQ and SPQ is 90pcs per carton(530x290x230mm) for wholesale, incremental is one SPQ 90pcs.
- The 3D printed speaker cabinet is for sale, MOQ and SPQ is 2pcs per small cardboard box too.

Drafted:

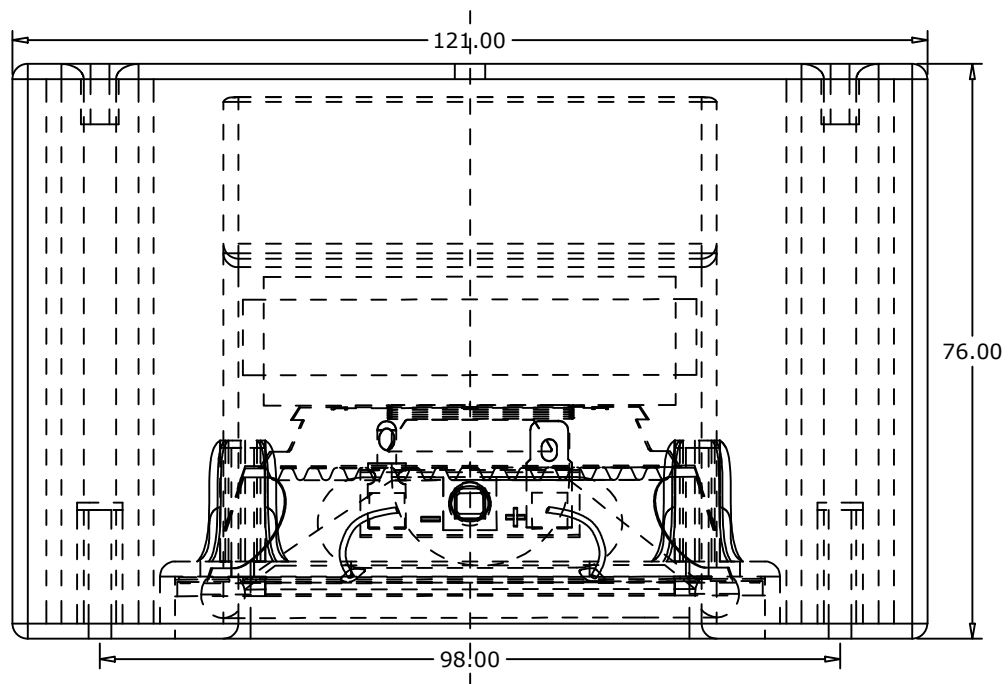
Approved:

Countersigned:

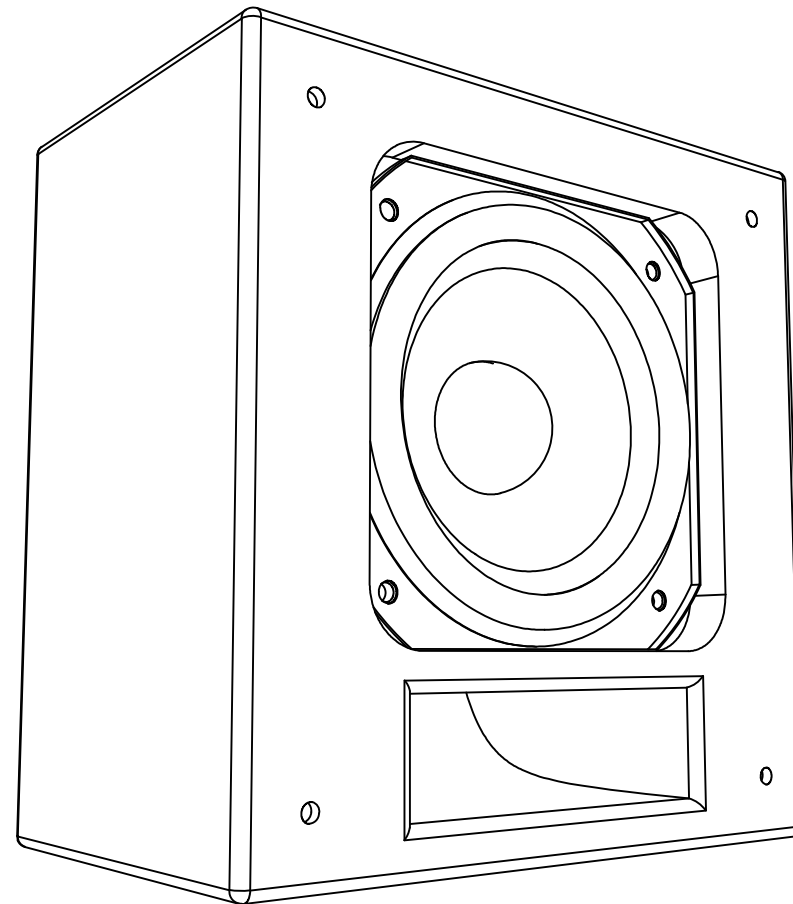


Note: 1) According to the cabinet design, the minus changing for dimensions and specifications are subjected to change without notice.
2) Take tolerance reference from the title block, unless specified in the diagram.

TOLERANCE	DRAWN BY	CHECKED BY	APPROVED BY	SCALE	1:1	MATERIALS	TITLE	3RD Angle Projection of Cabinet Design for Speaker Unit Full Range 70mm 10W
XY ±0.2mm	L. VICTOR	N. ZULNAZME	Z. CHENG	UNIT	Millimeter	FINISH		
Z ±0.2mm						FINISH		
REVISION						FINISH		
1.00	ISSUED 4.3.2021		Designed by: Berrybak Sdn.Bhd. for Wondom Audio Technology & Sure Electronics Co.,Ltd.		3RD ANGLE PROJECTION		DRAWING NO.	SUFR7010-08-01-01



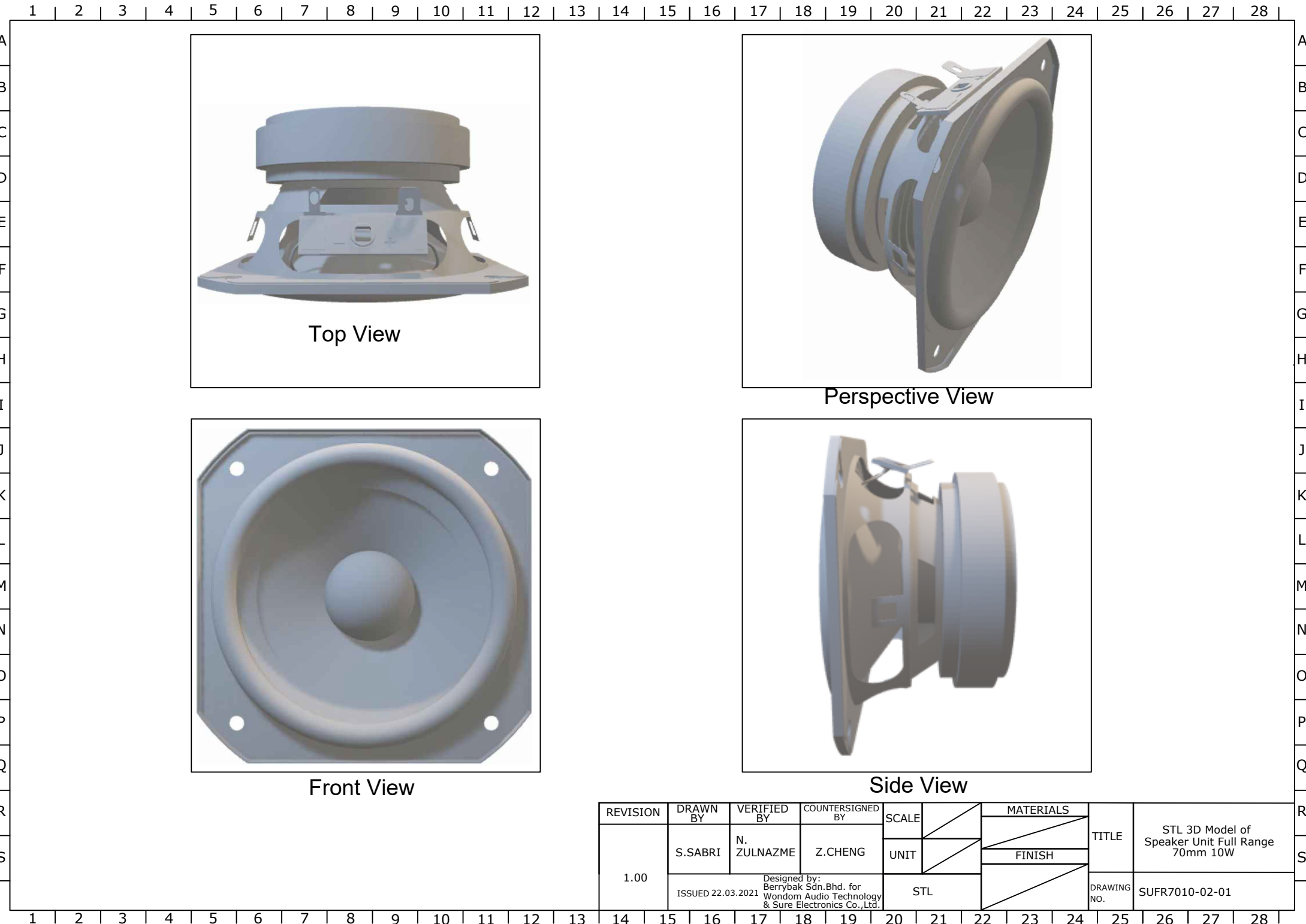
Top View



3D View

- Note: 1) According to the Cabinet Design, the minus changing for dimensions and specifications are subjected to change without notice.
 2) Take tolerance reference from the title block, unless specified in the diagram.
 3) 3D view is not 1:1 scale.

TOLERANCE	DRAWN BY	CHECKED BY	APPROVED BY	SCALE	1:1	MATERIALS	TITLE	3RD Angle Projection of Cabinet Design for Speaker Unit Full Range 70mm 10W
XY ±0.2mm	L. VICTOR	N.ZULNAZME	Z.CHENG	UNIT	Millimeter			
Z ±0.2mm						FINISH		
REVISION	Designed by: Berrybak Sdn.Bhd. for Wondom Audio Technology & Sure Electronics Co.,Ltd.			3RD ANGLE PROJECTION			DRAWING NO.	SUFR7010-08-01-02
1.00	ISSUED 4.3.2021							



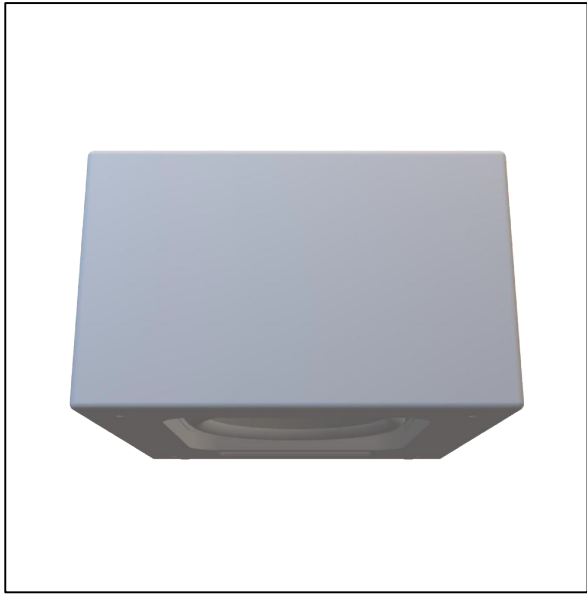
Top View

Perspective View

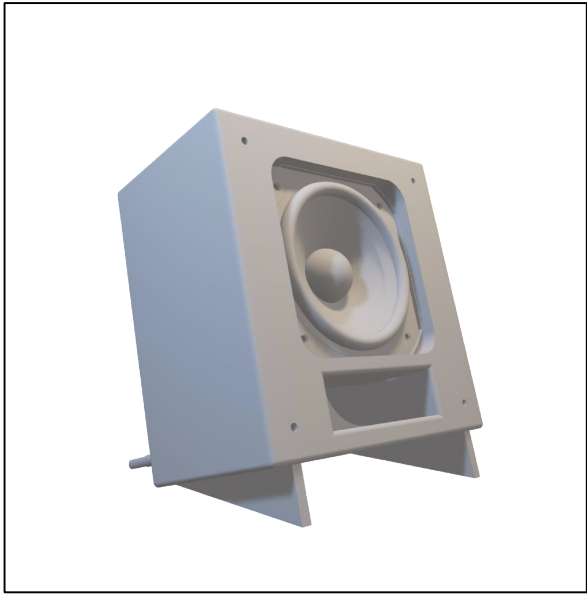
Front View

Side View

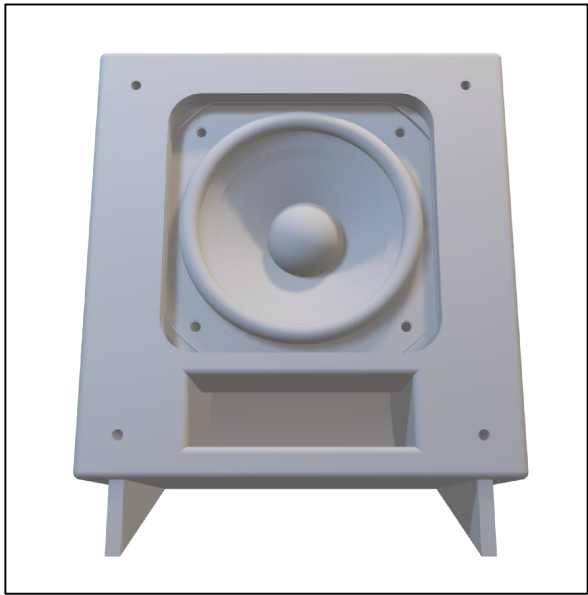
REVISION	DRAWN BY	VERIFIED BY	COUNTERSIGNED BY	SCALE		MATERIALS		
1.00	S.SABRI	N. ZULNAZME	Z.CHENG	UNIT		FINISH	TITLE	STL 3D Model of Speaker Unit Full Range 70mm 10W
				STL				
	ISSUED 22.03.2021		Designed by: Berrybak Sdn.Bhd. for Wondom Audio Technology & Sure Electronics Co.,Ltd.			DRAWING NO.	SUFR7010-02-01	



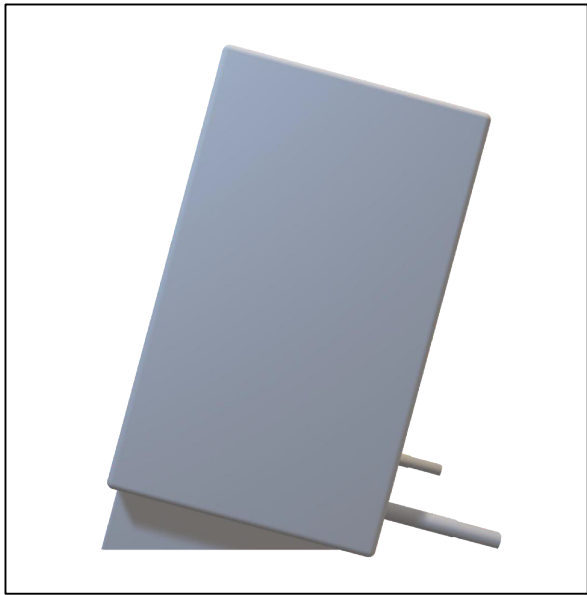
Top View



Perspective View



Front View



Side View

REVISION	DRAWN BY	CHECKED BY	APPROVED BY	SCALE		MATERIALS		
1.00	L.VICTOR	N.ZULNAZME	Z.CHENG	UNIT		FINISH		STL 3D Model of Cabinet Design for Speaker Unit Full Range 70mm 10W
	ISSUED 4.3.2021			STL			DRAWING NO.	SUFR7010-08-02
	Designed by: Berrybak Sdn.Bhd. for Wondom Audio Technology & Sure Electronics Co.,Ltd.							