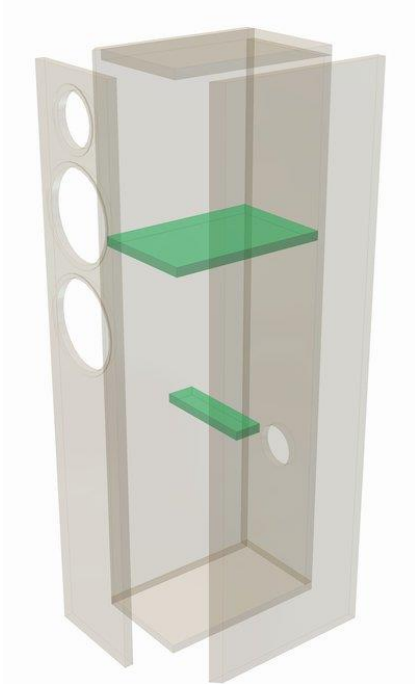


## CLOU

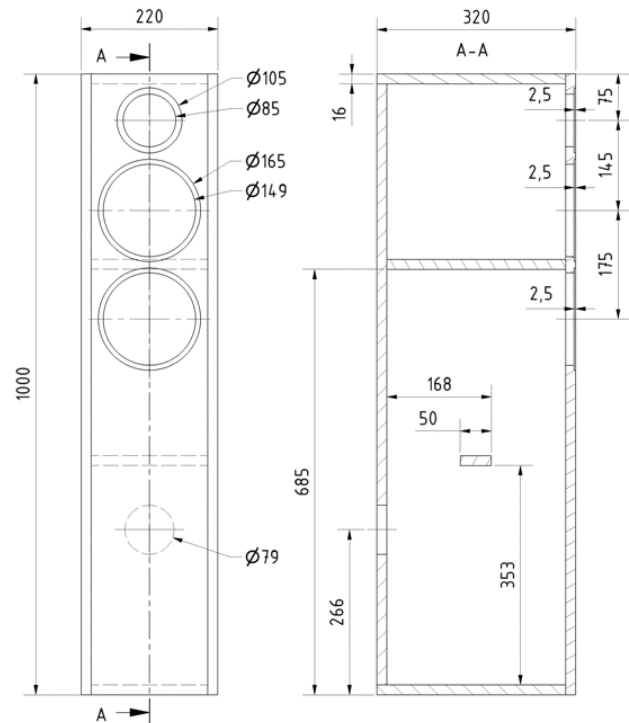
### Exploded drawing



### Cabinet part list for 1 box

Parts	Size(mm)	Quantity
Material	16mm MDF or chipboard	
Side panels	320 x 1000	2
Front	188 x 1000	1
Rear panel	188 x 968	1
Separating board	188 x 288	1
Reinforcer	188 x 50	1
Top	304 x 188	1
Bottom panel	304x1888	1

### Sketch



### Assembly

All the cabinet panels are cut from 16 mm chipboard or medium density fibreboard, butt-jointed and glued. After that, the openings for the driver and terminals are cut out and any necessary recesses cut. The chamfer on the outer baffle can be made either before the cabinet is glued together or afterwards.

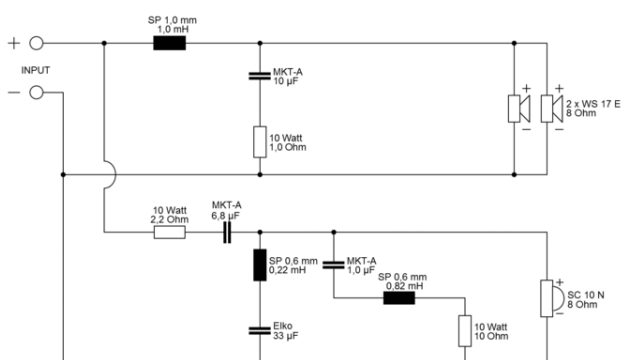
The crossover has to be mounted on the inner side of the rear panel across from the lower woofer.

### Inner damping

The damping material is loosely pushed into the cabinet.

### Crossover

Clou (Stand 29.06.2015)



CLOU  
15.10.2008

