

SOLO 50

Exploded drawings

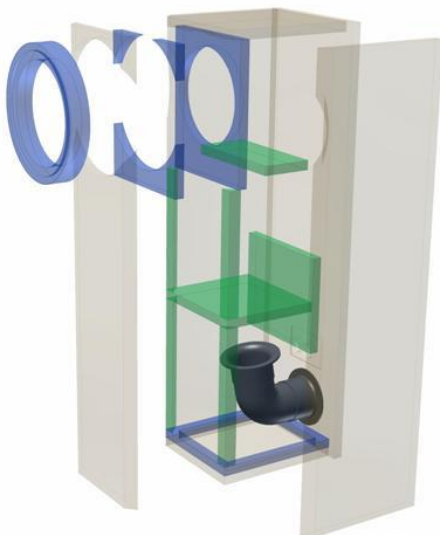
Version 1 (without ring)



Cabinet part lists

Parts	Size(mm)	Quantity
Material: 16mm chipboard or MDF		
Front, rear panels	900 x 260	2
Side panels	900 x 262	2
Top, bottom panels, frame	222 x 262	3
Partition panel	222 x 203	1
Rear channel panel	222 x 200	1
Brace	222 x 100	1

Version 2 (with ring)



Parts	Size(mm)	Quantity
Material: 19mm chipboard or MDF		
Rear panel	900 x 260	1
Side panels	900 x 262	2
Front	900 x 222	1
Top, bottom panels, frame	262 x 222	3
Partition panel	203 x 222	1
Rear channel panel	200 x 222	1
Mounting panels	280 x 222	2
Brace	100 x 222	1
Material: 38mm chipboard or MDF		
Mounting ring	D = 250	1
Material: Triangular ledge		
Braces	563 x 25 x 25	2

Assembly

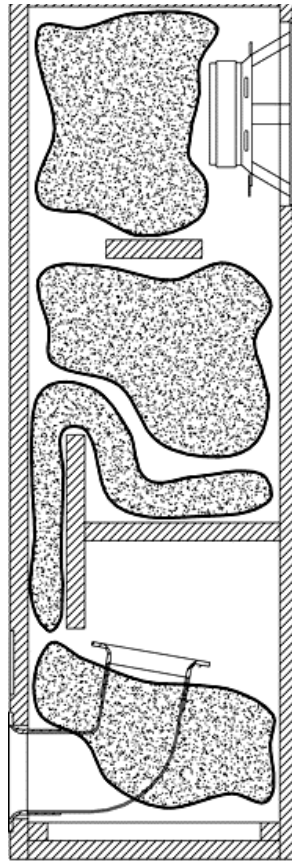
We suggest two alternative cabinets:

- 1) simple cabinet with narrow chamfers on the sides
- 2) more sophisticated design with a ring round the B 200 - 6 Ohm. Acoustically, there is hardly likely to be any difference. The second alternative is much more complex to build, though.

The base is screwed onto a frame and not glued, to enable you to fit the bass reflex tube.

Inner Damping

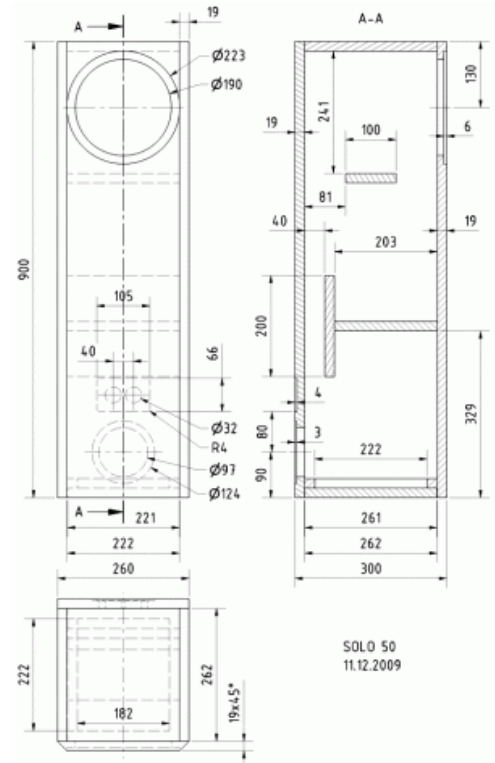
Four mats of damping material are arranged as shown (see drawing). The mat for the inner channel is cut to the width of the cabinet (22 cm) and pushed into the channel flat. The lower mat is rolled lengthways and wrapped around the bass reflex tube but leaving the opening free



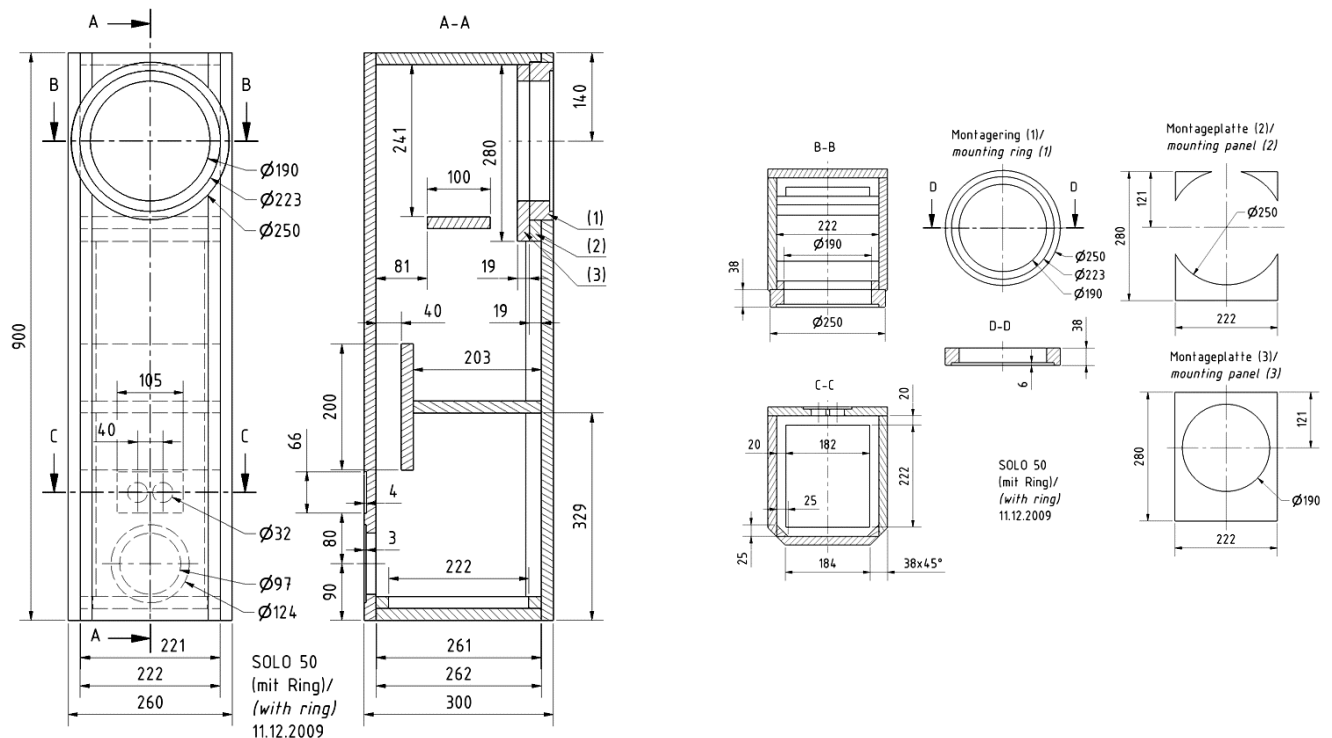
SOLO 50 - Bedämpfung
09.10.03

Sketches

Version 1 (without ring)

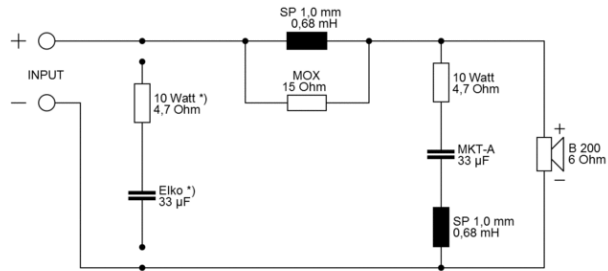


Version 2 (with ring)



Crossover

Solo 50 / 100 (Stand 23.06.2015)



*) Impedanzlinearisierung optional
*) impedance compensation optional